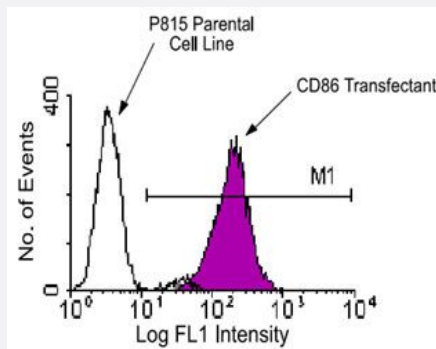


# Cd86 monoclonal antibody, clone GL1 (PE/Cy7)

Catalog # MAB5756      Size 100 ug

## Applications



### Flow Cytometry

BALB/c spleen cells were activated by incubation for 72 hours with LPS. The cells were then harvested and stained with Cd86 monoclonal antibody, clone GL1 (FITC) (Cat # MAB5751). A wide gate was set to include small, medium and large cells, following which the cells were analyzed on a FACScan™ flow cytometer (BDIS, San Jose, CA).

## Specification

<b>Product Description</b>	Rat monoclonal antibody raised against native Cd86.
<b>Immunogen</b>	Native purified Cd86 from LPS-activated mouse B cells.
<b>Host</b>	Rat
<b>Reactivity</b>	Mouse
<b>Specificity</b>	Mouse CD86, the B7-2 co-stimulatory molecule and a ligand for CD28 and CD152/CTLA-4.
<b>Form</b>	Liquid
<b>Conjugation</b>	PE/Cy7
<b>Isotype</b>	IgG2a, kappa
<b>Recommend Usage</b>	Flow Cytometry (0.1 ug/10 <sup>6</sup> cells) The optimal working dilution should be determined by the end user.
<b>Storage Buffer</b>	In PBS (0.09% sodium azide)

**Storage Instruction**

Store in the dark at 4°C. Do not freeze.  
Avoid prolonged exposure to light.  
Aliquot to avoid repeated freezing and thawing.

**Note**

This product contains sodium azide: a POISONOUS AND HAZARDOUS SUBSTANCE which should be handled by trained staff only.

## Applications

- Immunohistochemistry (Frozen sections)
- Immunoprecipitation
- Flow Cytometry

BALB/c spleen cells were activated by incubation for 72 hours with LPS. The cells were then harvested and stained with Cd86 monoclonal antibody, clone GL1 (FITC) (Cat # MAB5751). A wide gate was set to include small, medium and large cells, following which the cells were analyzed on a FACScan™ flow cytometer (BDIS, San Jose, CA).

## Gene Info — Cd86

Entrez GeneID	<a href="#">12524</a>
Gene Name	Cd86
Gene Alias	B7, B7-2, B7.2, B70, CLS1, Cd28l2, ETC-1, Ly-58, Ly58, MB7, MB7-2, TS/A-2
Gene Description	CD86 antigen
Gene Ontology	<a href="#">Hyperlink</a>
Other Designations	OTTMUSP00000015940 T-lymphocyte activation antigen CD86 activation B7-2 antigen early T cell costimulatory molecule-1

## Publication Reference

- [The tissue distribution of the B7-2 costimulator in mice: abundant expression on dendritic cells in situ and during maturation in vitro.](#)

Inaba K, Witmer-Pack M, Inaba M, Hathcock KS, Sakuta H, Azuma M, Yagita H, Okumura K, Linsley PS, Ikehara S, Muramatsu S, Hodes RJ, Steinman RM.

The Journal of Experimental Medicine 1994 Nov; 180(5):1849.

Application: Flow Cyt, Func, IHC-Fr, Mouse, Mouse B cells and dendritic cells, Mouse heart, liver, spleen, thymus, tongue

- [Comparative analysis of B7-1 and B7-2 costimulatory ligands: expression and function.](#)

Hathcock KS, Laszlo G, Pucillo C, Linsley P, Hodes RJ.

The Journal of Experimental Medicine 1994 Aug; 180(2):631.

- [Uncovering of functional alternative CTLA-4 counter-receptor in B7-deficient mice.](#)

Freeman GJ, Borriello F, Hodes RJ, Reiser H, Hathcock KS, Laszlo G, McKnight AJ, Kim J, Du L, Lombard DB, et al..

Science 1993 Nov; 262(5135):907.

Application: Flow Cyt, Mouse, Mouse splenic B cells