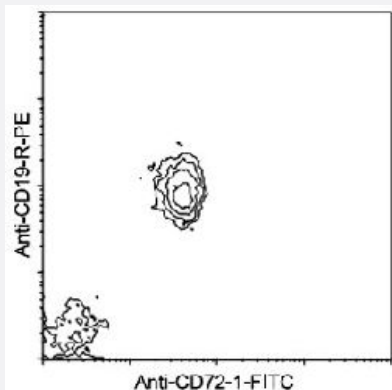


# Cd72 monoclonal antibody, clone 10-1.D2 (FITC)

Catalog # MAB5748

Size 500 ug

## Applications



### Flow Cytometry

BALB/c spleen cells were double-stained with Cd72.1 monoclonal antibody, clone 10-1.D2 (FITC) (Cat # MAB5748) and rat anti-mouse CD19-R-PE. Lymphocytes were then gated and analyzed by flow cytometry.

## Specification

**Product Description** Mouse monoclonal antibody raised against native Cd72.

**Immunogen** Native purified Cd72 from DBA/2 mouse spleen cells.

**Host** Mouse

**Reactivity** Mouse

**Specificity** Mouse CD72.1/Lyb-2.1, 45 KDa.

**Form** Liquid

**Conjugation** FITC

**Isotype** IgG2b, kappa

**Recommend Usage** Flow Cytometry (1 ug/10<sup>6</sup> cells)  
The optimal working dilution should be determined by the end user.

**Storage Buffer** In PBS (0.09% sodium azide)

**Storage Instruction**

Store in the dark at 4°C. Do not freeze.  
Avoid prolonged exposure to light.  
Aliquot to avoid repeated freezing and thawing.

**Note**

This product contains sodium azide: a POISONOUS AND HAZARDOUS SUBSTANCE which should be handled by trained staff only.

## Applications

- Flow Cytometry

BALB/c spleen cells were double-stained with Cd72.1 monoclonal antibody, clone 10-1.D2 (FITC) (Cat # MAB5748) and rat anti-mouse CD19-R-PE. Lymphocytes were then gated and analyzed by flow cytometry.

## Gene Info — Cd72

**Entrez GeneID** [12517](#)

**Gene Name** Cd72

**Gene Alias** CD72c, Ly-19, Ly-32, Ly-m19, Lyb-2

**Gene Description** CD72 antigen

**Gene Ontology** [Hyperlink](#)

**Other Designations** OTTMUSP00000007235

## Publication Reference

- [Biochemical identity of the mouse Ly-19.2 and Ly-32.2 alloantigens with the B cell differentiation antigen Lyb-2/CD72.](#)

Robinson WH, Landolfi MM, Schafer H, Parnes JR.

Journal of Immunology 1993 Nov; 151(9):4764.

- [Ly-1 \(CD5\), a membrane glycoprotein of mouse T lymphocytes and a subset of B cells, is a natural ligand of the B cell surface protein Lyb-2 \(CD72\).](#)

Luo W, Van de Velde H, von Hoegen I, Parnes JR, Thielemans K.

Journal of Immunology 1992 Mar; 148(6):1630.

Application: Func, Human, EL4 cells, Lymphocytes

- [Alpha-helical coiled-coil stalks in the low-affinity receptor for IgE \(Fc epsilon RII/CD23\) and related C-type lectins.](#)

Beavil AJ, Edmeades RL, Gould HJ, Sutton BJ.

PNAS 1992 Jan; 89(2):753.