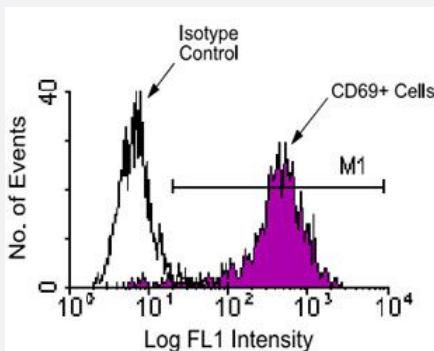


Cd69 monoclonal antibody, clone H1.2F3 (PE/Cy7)

Catalog # MAB5747 Size 100 ug

Applications



Flow Cytometry

Fresh BALB/c spleen cells were activated by incubation for 20 hours with PMA + ionomycin, then stained with either hamster IgG-FITC (as an isotype control) or Cd69 monoclonal antibody, clone H1.2F3 (FITC) (Cat # MAB5742). Large, activated cells were then gated and analyzed on a FACScan™ flow cytometer (BDIS, San Jose, CA).

Specification

Product Description	Hamster monoclonal antibody raised against native Cd69.
Immunogen	Native purified Cd69 from Y245 mouse dendritic epidermal T cell line.
Host	Hamster
Reactivity	Mouse
Specificity	Mouse CD69/Very Early Activation Antigen (VEA), Mr 85 KDa (unreduced).
Form	Liquid
Conjugation	PE/Cy7
Isotype	IgG, lambda
Recommend Usage	Flow Cytometry (0.2 ug/10 ⁶ cells) The optimal working dilution should be determined by the end user.
Storage Buffer	In PBS (0.09% sodium azide)

Storage Instruction

Store in the dark at 4°C. Do not freeze.
Avoid prolonged exposure to light.
Aliquot to avoid repeated freezing and thawing.

Note

This product contains sodium azide: a POISONOUS AND HAZARDOUS SUBSTANCE which should be handled by trained staff only.

Applications

- Immunohistochemistry (Frozen sections)
- Immunoprecipitation
- Flow Cytometry

Fresh BALB/c spleen cells were activated by incubation for 20 hours with PMA + ionomycin, then stained with either hamster IgG-FITC (as an isotype control) or Cd69 monoclonal antibody, clone H1.2F3 (FITC) (Cat # MAB5742). Large, activated cells were then gated and analyzed on a FACScan™ flow cytometer (BDIS, San Jose, CA).

Gene Info — Cd69

Entrez GeneID [12515](#)

Gene Name Cd69

Gene Alias 5830438K24Rik, A1452015, AIM, VEA

Gene Description CD69 antigen

Gene Ontology [Hyperlink](#)

Other Designations Early activation antigen CD69|Very Early Activation Antigen

Publication Reference

- [The mouse CD69 gene. Structure, expression, and mapping to the NK gene complex.](#)

Ziegler SF, Levin SD, Johnson L, Copeland NG, Gilbert DJ, Jenkins NA, Baker E, Sutherland GR, Feldhaus AL, Ramsdell F.
Journal of Immunology 1994 Feb; 152(3):1228.

- [Very early \(VEA\) and very late \(VLA\) activation antigens have distinct functions in T lymphocyte activation.](#)

Yokoyama WM, Maxfield SR, Shevach EM.

Immunological Reviews 1989 Jun; 109:153.

Application: Flow Cyt, Mouse, Mouse T cells

- [Characterization of a cell surface-expressed disulfide-linked dimer involved in murine T cell activation.](#)

Yokoyama WM, Koning F, Kehn PJ, Pereira GM, Stingl G, Coligan JE, Shevach EM.

Journal of Immunology 1988 Jul; 141(2):369.

Application: Flow Cyt, Mouse , Mouse lymphocytes