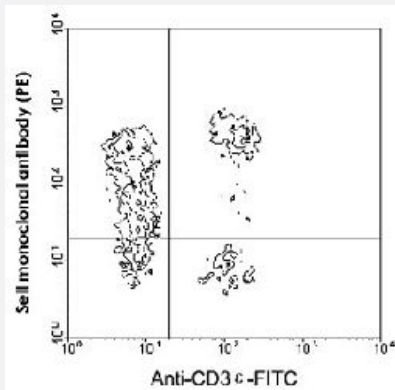


Sell monoclonal antibody, clone MEL-14 (APC/CY7)

Catalog # MAB5741 Size 100 ug

Applications



Flow Cytometry

BALB/c splenocytes were double-stained with Sell monoclonal antibody, clone MEL-14 (PE) (Cat # MAB5737) and rat anti-mouse Cd3e-FITC. Lymphocytes were gated and analyzed on a FACScan™ flow cytometer (BDIS, San Jose, CA).

Specification

Product Description Rat monoclonal antibody raised against Sell.

Immunogen C3H/eb cloned mouse B lymphoma 38C-13.

Host Rat

Reactivity Mouse

Specificity CD62L/L-selectin, Mr 90 KDa.

Form Liquid

Conjugation APC/Cy7

Isotype IgG2a, kappa

Recommend Usage Flow Cytometry (0.1 ug/10⁶ cells)
The optimal working dilution should be determined by the end user.

Storage Buffer In PBS (0.09% sodium azide)

Storage Instruction

Store in the dark at 4°C. Do not freeze.
Avoid prolonged exposure to light.
Aliquot to avoid repeated freezing and thawing.

Note

This product contains sodium azide: a POISONOUS AND HAZARDOUS SUBSTANCE which should be handled by trained staff only.

Applications

- Immunohistochemistry (Frozen sections)
- Immunoprecipitation
- Flow Cytometry

BALB/c splenocytes were double-stained with Sell monoclonal antibody, clone MEL-14 (PE) (Cat # MAB5737) and rat anti-mouse Cd3e-FITC. Lymphocytes were gated and analyzed on a FACScan™ flow cytometer (BDIS, San Jose, CA).

Gene Info — Sell

Entrez GeneID[20343](#)**Gene Name**

Sell

Gene Alias

A1528707, CD62L, L-selectin, LECAM-1, Lnh, Ly-22, Ly-m22, Lyam-1, Lyam1

Gene Description

selectin, lymphocyte

Gene Ontology[Hyperlink](#)**Gene Summary**

O

Other Designations

-

Publication Reference

- [The mouse lymph node homing receptor is identical with the lymphocyte cell surface marker Ly-22: role of the EGF domain in endothelial binding.](#)

Siegelman MH, Cheng IC, Weissman IL, Wakeland EK.

Cell 1990 May; 61(4):611.

- [Phenotypic analysis of thymocytes that express homing receptors for peripheral lymph nodes.](#)

Reichert RA, Weissman IL, Butcher EC.

Journal of Immunology 1986 May; 136(10):3521.

- [A cell-surface molecule involved in organ-specific homing of lymphocytes.](#)

Gallatin WM, Weissman IL, Butcher EC.

Nature 1983 Jul; 304(5921):30.