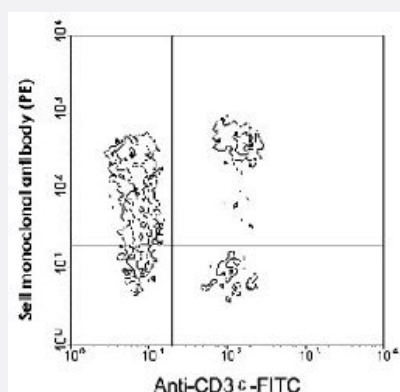


# Sell monoclonal antibody, clone MEL-14 (Biotin)

Catalog # MAB5736      Size 500 ug

## Applications



### Flow Cytometry

BALB/c splenocytes were double-stained with Sell monoclonal antibody, clone MEL-14 (PE) (Cat # MAB5737) and rat anti-mouse Cd3e-FITC. Lymphocytes were gated and analyzed on a FACScan™ flow cytometer (BDIS, San Jose, CA).

## Specification

**Product Description** Rat monoclonal antibody raised against Sell.

**Immunogen** C3H/eb cloned mouse B lymphoma 38C-13.

**Host** Rat

**Reactivity** Mouse

**Specificity** CD62L/L-selectin, Mr 90 KDa.

**Form** Liquid

**Conjugation** Biotin

**Isotype** IgG2a, kappa

**Recommend Usage** Flow Cytometry (0.1 ug/10<sup>6</sup> cells)  
The optimal working dilution should be determined by the end user.

**Storage Buffer** In PBS (0.09% sodium azide)

**Storage Instruction**

Store in the dark at 4°C. Do not freeze.  
Avoid prolonged exposure to light.  
Aliquot to avoid repeated freezing and thawing.

**Note**

This product contains sodium azide: a POISONOUS AND HAZARDOUS SUBSTANCE which should be handled by trained staff only.

## Applications

- Immunohistochemistry (Frozen sections)
- Immunoprecipitation
- Flow Cytometry

BALB/c splenocytes were double-stained with Sell monoclonal antibody, clone MEL-14 (PE) (Cat # MAB5737) and rat anti-mouse Cd3e-FITC. Lymphocytes were gated and analyzed on a FACScan™ flow cytometer (BDIS, San Jose, CA).

## Gene Info — Sell

**Entrez GeneID** [20343](#)

**Gene Name** Sell

**Gene Alias** AI528707, CD62L, L-selectin, LECAM-1, Lnhf, Ly-22, Ly-m22, Lyam-1, Lyam1

**Gene Description** selectin, lymphocyte

**Gene Ontology** [Hyperlink](#)

**Gene Summary** O

**Other Designations** -

## Publication Reference

- [The mouse lymph node homing receptor is identical with the lymphocyte cell surface marker Ly-22: role of the EGF domain in endothelial binding.](#)

Siegelman MH, Cheng IC, Weissman IL, Wakeland EK.

Cell 1990 May; 61(4):611.

- [Phenotypic analysis of thymocytes that express homing receptors for peripheral lymph nodes.](#)

Reichert RA, Weissman IL, Butcher EC.

Journal of Immunology 1986 May; 136(10):3521.

Application: Flow Cyt, IF, Mouse, Mouse lymphocytes

- [A cell-surface molecule involved in organ-specific homing of lymphocytes.](#)

Gallatin WM, Weissman IL, Butcher EC.

Nature 1983 Jul; 304(5921):30.