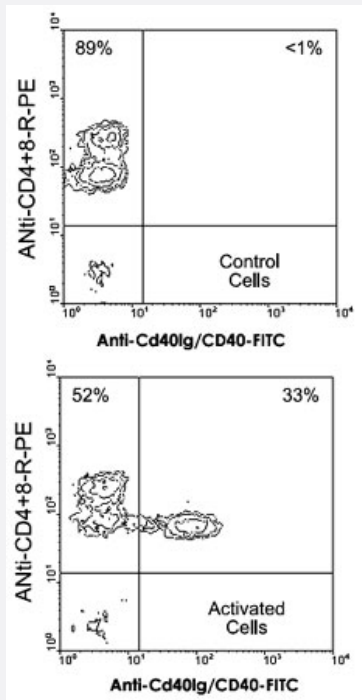


# Cd40lg monoclonal antibody, clone MR1 (Biotin)

Catalog # MAB5718      Size 500 ug

## Applications



### Flow Cytometry

Partially purified spleen T cells from BALB/c mice were incubated with either hamster IgG or plate-bound Cd3e monoclonal antibody, clone 145-2C11 for 7 hours at 37°C. The cells were then harvested, double-stained with Cd40lg monoclonal antibody, clone MR1 (FITC) (Cat # MAB5717) and anti-CD4+8-R-PE, and analyzed by flow cytometry.

## Specification

Product Description	Hamster monoclonal antibody raised against Cd40lg.
Immunogen	Activated mouse Th1 clone D1.6.
Host	Hamster
Reactivity	Mouse
Specificity	CD154 (Mouse CD40 ligand/gp39), Mr 39-KDa.
Form	Liquid
Conjugation	Biotin

Isotype	IgG, kappa
Recommend Usage	Flow Cytometry (2 ug/10 <sup>6</sup> cells) The optimal working dilution should be determined by the end user.
Storage Buffer	In PBS (0.09% sodium azide)
Storage Instruction	Store in the dark at 4°C. Do not freeze. Avoid prolonged exposure to light. Aliquot to avoid repeated freezing and thawing.
Note	This product contains sodium azide: a POISONOUS AND HAZARDOUS SUBSTANCE which should be handled by trained staff only.

## Applications

- Immunoprecipitation
- Flow Cytometry

Partially purified spleen T cells from BALB/c mice were incubated with either hamster IgG or plate-bound Cd3e monoclonal antibody, clone 145-2C11 for 7 hours at 37°C. The cells were then harvested, double-stained with Cd40lg monoclonal antibody, clone MR1 (FITC) (Cat # MAB5717) and anti-CD4+8-R-PE, and analyzed by flow cytometry.

## Gene Info — Cd40lg

Entrez GeneID	<a href="#">21947</a>
Gene Name	Cd40lg
Gene Alias	CD154, Cd40l, HIGM1, IGM, IMD3, Ly-62, Ly62, T-BAM, TRAP, Tnfsf5, gp39
Gene Description	CD40 ligand
Gene Ontology	<a href="#">Hyperlink</a>
Gene Summary	member 5
Other Designations	OTTMUSP00000019349 tumor necrosis factor (ligand) superfamily, member 5

## Publication Reference

- [The CD40 ligand, gp39, is defective in activated T cells from patients with X-linked hyper-IgM syndrome.](#)

Aruffo A, Farrington M, Hollenbaugh D, Li X, Milatovich A, Nonoyama S, Bajorath J, Grosmaire LS, Stenkamp R, Neubauer M, et al..

Cell 1993 Jan; 72(2):291.

Application: Flow Cyt, Human, Monkey, COS cells, Human T cells

- [The human T cell antigen gp39, a member of the TNF gene family, is a ligand for the CD40 receptor: expression of a soluble form of gp39 with B cell co-stimulatory activity.](#)

Hollenbaugh D, Grosmaire LS, Kulas CD, Chalupny NJ, Braesch-Andersen S, Noelle RJ, Stamenkovic I, Ledbetter JA, Aruffo A.

The EMBO Journal 1992 Dec; 11(12):4313.

- [A 39-kDa protein on activated helper T cells binds CD40 and transduces the signal for cognate activation of B cells.](#)

Noelle RJ, Roy M, Shepherd DM, Stamenkovic I, Ledbetter JA, Aruffo A.

PNAS 1992 Jul; 89(14):6550.