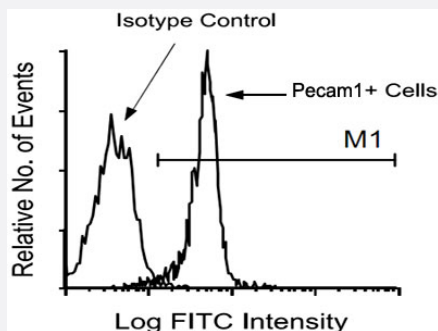


Pecam1 monoclonal antibody, clone 390 (APC)

Catalog # MAB5715 Size 100 ug

Applications



Flow Cytometry

BALB/c splenocytes were first incubated with Pecam1 monoclonal antibody, clone 390 (Cat # MB3230) and then with goatanti-rat Ig-FITC. Small lymphocytes were gated and analyzed on a FACScan™ flow cytometer (BDIS, San Jose, CA).

Specification

Product Description	Rat monoclonal antibody raised against native Pecam1.
Immunogen	Native purified Pecam1 from mouse leukocyte cell line 32D
Host	Rat
Reactivity	Mouse
Specificity	Mouse CD31/PECAM-1, Mr 130-140 KDa.
Form	Liquid
Conjugation	APC
Isotype	IgG2a, kappa
Recommend Usage	Flow Cytometry (0.2 ug/10 ⁶ cells) The optimal working dilution should be determined by the end user.
Storage Buffer	In PBS (0.09% sodium azide)

Storage Instruction

Store in the dark at 4°C. Do not freeze.
Avoid prolonged exposure to light.
Aliquot to avoid repeated freezing and thawing.

Note

This product contains sodium azide: a POISONOUS AND HAZARDOUS SUBSTANCE which should be handled by trained staff only.

Applications

- Immunohistochemistry (Frozen sections)
- Immunoprecipitation
- Flow Cytometry

BALB/c splenocytes were first incubated with Pecam1 monoclonal antibody, clone 390 (Cat # MB3230) and then with goat anti-rat Ig-FITC. Small lymphocytes were gated and analyzed on a FACScan™ flow cytometer (BDIS, San Jose, CA).

Gene Info — Pecam1

Entrez GeneID[18613](#)**Gene Name**

Pecam1

Gene Alias

C85791, Cd31, MGC102160, PECAM-1, Pecam

Gene Description

platelet/endothelial cell adhesion molecule 1

Gene Ontology[Hyperlink](#)**Other Designations**

OTTMUSP00000003452|OTTMUSP00000003454|PECAM-1/CD31

Publication Reference

- [Platelet endothelial cell adhesion molecule \(CD31\).](#)

DeLisser HM, Newman PJ, Albelda SM.

Current Topics in Microbiology and Immunology 1993 Jan; 184:37.

Application: Flow Cyt, Human, Human endothelial cells, Human granulocytes, Human monocytes, Human platelets