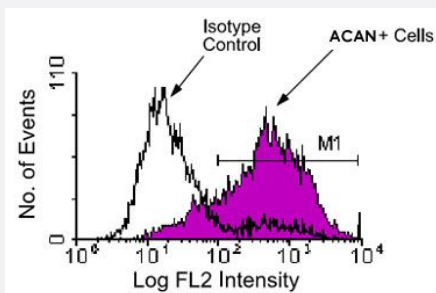


# Il2ra monoclonal antibody, clone 7D4 (SPRD)

Catalog # MAB5707      Size 100 ug

## Applications



### Flow Cytometry

Cells from BALB/c spleen were activated by PMA (10 ng/mL) and ionomycin (400 ng/mL) for 48 hours, then stained with Il2ra monoclonal antibody, clone 7D4 (FITC) (Cat # MAB5703) and analyzed on a FACScan™ flow cytometer (BDIS, San Jose, CA).

## Specification

<b>Product Description</b>	Rat monoclonal antibody raised against Il2ra.
<b>Immunogen</b>	IL-2-dependent BALB/c mouse helper T-cell clone HT-2.
<b>Host</b>	Rat
<b>Reactivity</b>	Mouse
<b>Specificity</b>	Low affinity alpha chain IL-2 receptor (IL-2Ralpha), Mr 55 KDa.
<b>Form</b>	Liquid
<b>Conjugation</b>	SPRD
<b>Isotype</b>	IgM, kappa
<b>Recommend Usage</b>	Flow Cytometry (0.2 ug/10 <sup>6</sup> cells) The optimal working dilution should be determined by the end user.
<b>Storage Buffer</b>	In PBS (0.09% sodium azide)

**Storage Instruction**

Store in the dark at 4°C. Do not freeze.  
Avoid prolonged exposure to light.  
Aliquot to avoid repeated freezing and thawing.

**Note**

This product contains sodium azide: a POISONOUS AND HAZARDOUS SUBSTANCE which should be handled by trained staff only.

## Applications

- Immunoprecipitation
- Flow Cytometry

Cells from BALB/c spleen were activated by PMA (10 ng/mL) and ionomycin (400 ng/mL) for 48 hours, then stained with IL2ra monoclonal antibody, clone 7D4 (FITC) (Cat # MAB5703) and analyzed on a FACScan™ flow cytometer (BDIS, San Jose, CA).

## Gene Info — IL2ra

**Entrez GeneID**[16184](#)**Gene Name**

IL2ra

**Gene Alias**

CD25, IL2r, Ly-43, MGC130561

**Gene Description**

interleukin 2 receptor, alpha chain

**Gene Ontology**[Hyperlink](#)**Gene Summary**

O

**Other Designations**

IL-2R alpha chain|OTTMUSP00000012002|p55 chain

## Publication Reference

- [Molecular cloning and expression of cDNAs for the human interleukin-2 receptor.](#)

Leonard WJ, Depper JM, Crabtree GR, Rudikoff S, Pumphrey J, Robb RJ, Kronke M, Svetlik PB, Peffer NJ, Waldmann TA, et al..

Nature 1984 Oct; 311(5987):626.

- [The murine IL 2 receptor. I. Monoclonal antibodies that define distinct functional epitopes on activated T cells and react with activated B cells.](#)

Ortega G, Robb RJ, Shevach EM, Malek TR.

Journal of Immunology 1984 Oct; 133(4):1970.

Application: Flow Cyt, Func, Mouse, HT2 cells

- [Identification and initial characterization of a rat monoclonal antibody reactive with the murine interleukin 2 receptor-ligand complex.](#)

Malek TR, Robb RJ, Shevach EM.

PNAS 1983 Sep; 80(18):5694.

Application: Flow Cyt, Mouse, Mouse lymphocytes