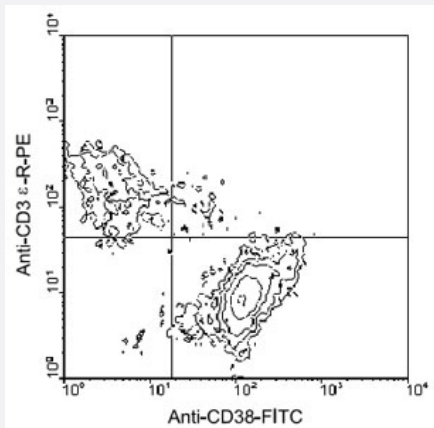


Cd38 monoclonal antibody, clone 90

Catalog # MAB5606 Size 500 ug

Applications



Flow Cytometry

Cells from BALB/c spleen were double-stained with Cd38 monoclonal antibody-FITC and hamster anti-mouse CD3-R-PE. Small lymphocytes were gated and analyzed on a FACScan flow cytometer (BDIS, San Jose, CA).

Specification

Product Description	Rat monoclonal antibody raised against native Cd38.
Immunogen	Native purified Cd38 from mouse bone marrow pre-B cells.
Host	Rat
Reactivity	Mouse
Specificity	CD38 (Mr 42-KDa), an immunoregulatory ectoenzyme.
Form	Liquid
Isotype	IgG2a
Recommend Usage	The optimal working dilution should be determined by the end user.
Storage Buffer	In 100 mM BBS, pH 8.2
Storage Instruction	Store at 4°C.

Applications

- Immunohistochemistry (Frozen sections)
- Immunoprecipitation
- Flow Cytometry

Cells from BALB/c spleen were double-stained with Cd38 monoclonal antibody-FITC and hamster anti-mouse CD3-R-PE. Small lymphocytes were gated and analyzed on a FACScan flow cytometer (BDIS, San Jose, CA).

Gene Info — Cd38

Entrez GeneID	12494
---------------	-----------------------

Gene Name	Cd38
-----------	------

Gene Alias	Cd38-rs1
------------	----------

Gene Description	CD38 antigen
------------------	--------------

Gene Ontology	Hyperlink
---------------	---------------------------

Other Designations	-
--------------------	---

Publication Reference

- [Murine CD38: an immunoregulatory ectoenzyme.](#)

Lund F, Solvason N, Grimaldi JC, Parkhouse RM, Howard M.

Immunology Today 1995 Oct; 16(10):469.

Application: Flow Cyt, Func, Neutralization, Human, Mouse, B cells

- [Ligation of CD38 suppresses human B lymphopoiesis.](#)

Kumagai M, Coustan-Smith E, Murray DJ, Silvennoinen O, Murti KG, Evans WE, Malavasi F, Campana D.

The Journal of Experimental Medicine 1995 Mar; 181(3):1101.

Application: Flow Cyt, Func, Human, CEM-C7 cells, Human bone marrow cells, OP-1 cells

- [CD38 expression on mouse T cells: CD38 defines functionally distinct subsets of alpha beta TCR+CD4-CD8-thymocytes.](#)

Bean AG, Godfrey DI, Ferlin WG, Santos-Argumedo L, Parkhouse ME, Howard MC, Zlotnik A.

International Immunology 1995 Feb; 7(2):213.

Application: Flow Cyt, IF, Mouse, Lympho nodes, Spleen, Thymus, T cells