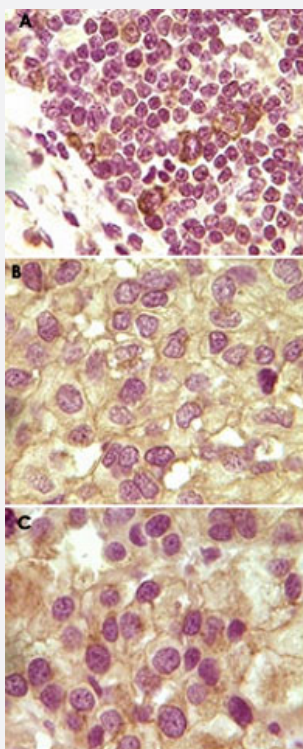


INHA monoclonal antibody, clone 4A2A9, 4A2F7, 4A2F2

Catalog # MAB5591 Size 100 ug

Applications



Immunohistochemistry (Formalin/PFA-fixed paraffin-embedded sections)

Immunohistochemical analysis of paraffin-embedded human lymphoid tissue (A), ovary tumor tissue (B) and testicle tumor tissue showing cytoplasmic/membrane localization using INHA monoclonal antibody, clone 4A2A9, 4A2F7, 4A2F2 (Cat # MAB5591) with DAB staining.

Specification

Product Description	Mouse monoclonal antibody raised against partial recombinant INHA.
Immunogen	Recombinant protein corresponding to INHA.
Host	Mouse
Reactivity	Human
Form	Liquid
Isotype	IgG1

Recommend Usage	ELISA (1:10000) Western Blot (1:500-1:1000) Immunohistochemistry (Formalin/PFA-fixed paraffin-embedded sections) (1:1000-1:2000) The optimal working dilution should be determined by the end user.
Storage Buffer	In PBS, pH 7.2 (50% glycerol, 0.01% sodium azide)
Storage Instruction	Store at -20°C. Aliquot to avoid repeated freezing and thawing.
Note	This product contains sodium azide: a POISONOUS AND HAZARDOUS SUBSTANCE which should be handled by trained staff only.

Applications

- Western Blot
- Immunohistochemistry (Formalin/PFA-fixed paraffin-embedded sections)
Immunohistochemical analysis of paraffin-embedded human lymphoid tissue (A), ovary tumor tissue (B) and testicle tumor tissue showing cytoplasmic/membrane localization using INHA monoclonal antibody, clone 4A2A9, 4A2F7, 4A2F2 (Cat # MAB5591) with DAB staining.
- Enzyme-linked Immunoabsorbent Assay

Publication Reference

- [Roles of inhibins, activins, and follistatin in the female reproductive system.](#)
Knight PG.
Frontiers in Neuroendocrinology. 1996 Oct; 17(4):476.
- [Extragenadal alpha-inhibin precursor proteins circulate in human male serum.](#)
Lambert-Messerlian GM, Crowley WF Jr, Schneyer AL.
The Journal of Clinical Endocrinology and Metabolism 1995 Oct; 80(10):3043.
Application: RIA, WB, Human, Human serum
- [Inhibin A-subunit cDNAs from porcine ovary and human placenta.](#)
Mayo KE, Cerelli GM, Spiess J, Rivier J, Rosenfeld MG, Evans RM, Vale W.
PNAS 1986 Aug; 83(16):5849.
Application: Func, Neutralization, Rat, Rat pituitary cells