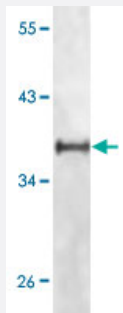


IGF1R monoclonal antibody, clone 3C8B1

Catalog # MAB5588

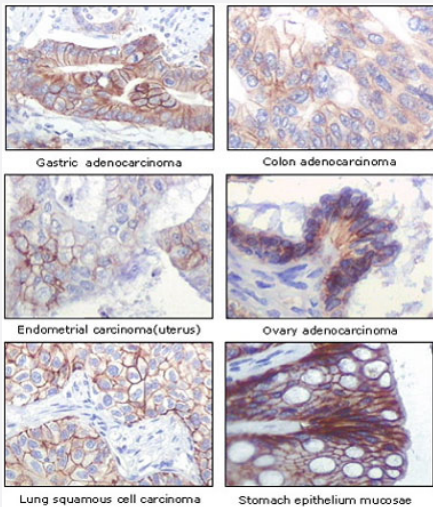
Size 100 uL

Applications



Western Blot (Recombinant protein)

Western blot analysis using IGF1R monoclonal antibody, clone 3C8B1 (Cat # MAB5588) against truncated IGF1R recombinant protein.



Immunohistochemistry (Formalin/PFA-fixed paraffin-embedded sections)

Immunohistochemical analysis of paraffin-embedded human normal and tumor tissue, showing membrane location using IGF1R monoclonal antibody, clone 3C8B1 (Cat # MAB5588) with DAB staining.

Specification

Product Description	Mouse monoclonal antibody raised against partial recombinant IGF1R.
Immunogen	Recombinant His fusion protein corresponding to IGF1R.
Host	Mouse
Reactivity	Human

Form	Liquid
Isotype	IgG2b
Recommend Usage	ELISA (1:10000) Western Blot (1:500-1:2000) Immunohistochemistry (Formalin/PFA-fixed paraffin-embedded sections) (1:500-1:2000) Immunohistochemistry (Frozen sections) (1:500-1:2000) The optimal working dilution should be determined by the end user.
Storage Buffer	In PBS, pH 7.2 (50% glycerol, 0.01% sodium azide)
Storage Instruction	Store at -20°C. Aliquot to avoid repeated freezing and thawing.
Note	This product contains sodium azide: a POISONOUS AND HAZARDOUS SUBSTANCE which should be handled by trained staff only.

Applications

- Western Blot (Recombinant protein)

Western blot analysis using IGF1R monoclonal antibody, clone 3C8B1 (Cat # MAB5588) against truncated IGF1R recombinant protein.

- Immunohistochemistry (Formalin/PFA-fixed paraffin-embedded sections)

Immunohistochemical analysis of paraffin-embedded human normal and tumor tissue, showing membrane location using IGF1R monoclonal antibody, clone 3C8B1 (Cat # MAB5588) with DAB staining.

- Immunohistochemistry (Frozen sections)

- Enzyme-linked Immunoabsorbent Assay

Publication Reference

- [Estradiol decreases IGF-1 and IGF-1 receptor expression in rat aortic smooth muscle cells. Mechanisms for its atheroprotective effects.](#)

Scheidegger KJ, Cenni B, Picard D, Delafontaine P.

The Journal of Biological Chemistry 2000 Dec; 275(49):38921.

Application: WB-Ce, Rat, RASMCs

- [The contradictions of the insulin-like growth factor 1 receptor.](#)

Baserga R.

Oncogene 2000 Nov; 19(49):5574.

- [Structure and function of the type 1 insulin-like growth factor receptor.](#)

Adams TE, Epa VC, Garrett TP, Ward CW.

Cellular and Molecular Life Sciences 2000 Jul; 57(7):1050.