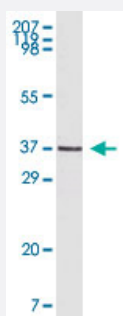


MCL1 monoclonal antibody, clone 8C6D4B1

Catalog # MAB5535

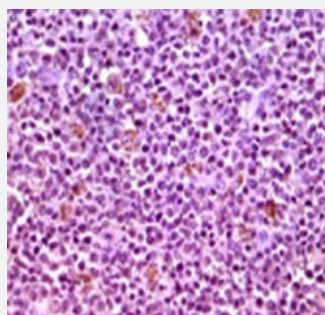
Size 100 ug

Applications



Western Blot (Cell lysate)

Western blot analysis using MCL1 monoclonal antibody, clone 8C6D4B1 (Cat # MAB5535) against BCBL-1 cell lysate.



Immunohistochemistry (Formalin/PFA-fixed paraffin-embedded sections)

Immunohistochemical analysis of paraffin-embedded human lymph node tissue showing cytoplasmic localization using MCL1 monoclonal antibody, clone 8C6D4B1 (Cat # MAB5535) with DAB staining.

Specification

Product Description	Mouse monoclonal antibody raised against partial recombinant MCL1.
Immunogen	Recombinant protein corresponding to human MCL1.
Host	Mouse
Reactivity	Human
Form	Liquid
Isotype	IgG1

Recommend Usage	Western Blot (1:200-1:1000) Immunohistochemistry (Formalin/PFA-fixed paraffin-embedded sections) (1:200-1:1000) Immunohistochemistry (Frozen sections) (1:200-1:1000) ELISA (1:10000) The optimal working dilution should be determined by the end user.
Storage Buffer	In PBS, pH 7.2 (50% glycerol, 0.01% sodium azide)
Storage Instruction	Store at -20°C. Aliquot to avoid repeated freezing and thawing.
Note	This product contains sodium azide: a POISONOUS AND HAZARDOUS SUBSTANCE which should be handled by trained staff only.

Applications

- Western Blot (Cell lysate)

Western blot analysis using MCL1 monoclonal antibody, clone 8C6D4B1 (Cat # MAB5535) against BCBL-1 cell lysate.

- Immunohistochemistry (Formalin/PFA-fixed paraffin-embedded sections)

Immunohistochemical analysis of paraffin-embedded human lymph node tissue showing cytoplasmic localization using MCL1 monoclonal antibody, clone 8C6D4B1 (Cat # MAB5535) with DAB staining.

- Immunohistochemistry (Frozen sections)

- Enzyme-linked Immunoabsorbent Assay

Gene Info — MCL1

Entrez GeneID	4170
Gene Name	MCL1
Gene Alias	BCL2L3, EAT, MCL1L, MCL1S, MGC104264, MGC1839, TM
Gene Description	myeloid cell leukemia sequence 1 (BCL2-related)
Omim ID	159552
Gene Ontology	Hyperlink

Gene Summary

The protein encoded by this gene belongs to the Bcl-2 family. Alternative splicing occurs at this locus and two transcript variants encoding distinct isoforms have been identified. The longer gene product (isoform 1) enhances cell survival by inhibiting apoptosis while the alternatively spliced shorter gene product (isoform 2) promotes apoptosis and is death-inducing. [provided by RefSeq]

Other Designations

OTTHUMP00000032794|OTTHUMP00000032795|induced myeloid leukemia cell differentiation protein Mcl-1|myeloid cell leukemia sequence 1|myeloid cell leukemia sequence 1, isoform 1

Disease

- [Bile Duct Neoplasms](#)
- [Cardiovascular Diseases](#)
- [Cholangiocarcinoma](#)
- [Diabetes Mellitus](#)
- [Edema](#)
- [Genetic Predisposition to Disease](#)
- [Narcolepsy](#)
- [Tuberculosis](#)