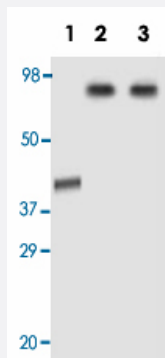


AOF2 monoclonal antibody, clone 1B2E5

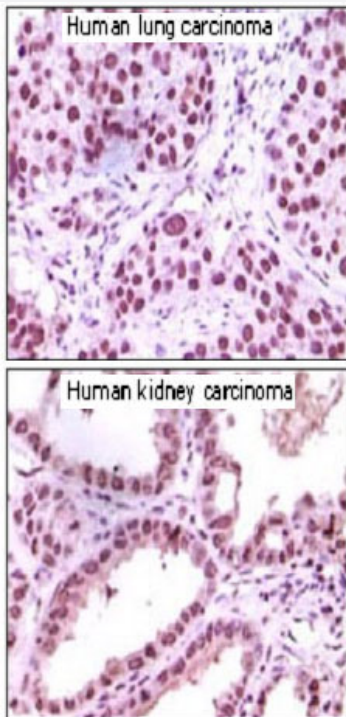
Catalog # MAB5530 Size 100 ug

Applications



Western Blot

Western blot analysis using AOF2 monoclonal antibody, clone 1B2E5 (Cat # MAB5530) against truncated AOF2 recombinant protein (Lane 1), HeLa (Lane 2) and Jurkat (Lane 3) cell lysate.



Immunohistochemistry (Formalin/PFA-fixed paraffin-embedded sections)

Immunohistochemical analysis of paraffin-embedded human lung carcinoma and kidney carcinoma tissue, showing nuclear localization using AOF2 monoclonal antibody, clone 1B2E5 (Cat # MAB5530) with DAB staining.

Specification

Product Description

Mouse monoclonal antibody raised against partial recombinant AOF2.

Immunogen	Recombinant protein corresponding to human AOF2.
Host	Mouse
Reactivity	Human
Form	Liquid
Isotype	IgG1
Recommend Usage	Western Blot (1:500-1:2000) Immunohistochemistry (Formalin/PFA-fixed paraffin-embedded sections) (1:500-1:2000) Immunohistochemistry (Frozen sections) (1:500-1:2000) ELISA (1:10000) The optimal working dilution should be determined by the end user.
Storage Buffer	In ascites
Storage Instruction	Store at -20°C. Aliquot to avoid repeated freezing and thawing.

Applications

- Western Blot

Western blot analysis using AOF2 monoclonal antibody, clone 1B2E5 (Cat # MAB5530) against truncated AOF2 recombinant protein (Lane 1), HeLa (Lane 2) and Jurkat (Lane 3) cell lysate.

- Immunohistochemistry (Formalin/PFA-fixed paraffin-embedded sections)

Immunohistochemical analysis of paraffin-embedded human lung carcinoma and kidney carcinoma tissue, showing nuclear localization using AOF2 monoclonal antibody, clone 1B2E5 (Cat # MAB5530) with DAB staining.

- Immunohistochemistry (Frozen sections)

- Enzyme-linked Immunoabsorbent Assay

Gene Info — AOF2

Entrez GeneID	23028
Gene Name	AOF2
Gene Alias	BHC110, KDM1, KIAA0601, LSD1
Gene Description	amine oxidase (flavin containing) domain 2

Omim ID	609132
Gene Ontology	Hyperlink
Gene Summary	This gene encodes a nuclear protein containing a SWIRM domain, a FAD-binding motif, and an a mine oxidase domain. This protein is a component of several histone deacetylase complexes, though it silences genes by functioning as a histone demethylase. Alternative splicing results in multiple transcript variants. [provided by RefSeq]
Other Designations	BRAF35-HDAC complex protein BHC110 FAD-binding protein BRAF35-HDAC complex, 110 kDa subunit lysine (K)-specific demethylase 1 lysine-specific histone demethylase 1

Publication Reference

- [Regulation of LSD1 histone demethylase activity by its associated factors.](#)

Shi YJ, Matson C, Lan F, Iwase S, Baba T, Shi Y.

Molecular Cell 2005 Sep; 19(6):857.

Application: WB, Human, HeLa cells

- [LSD1 demethylates repressive histone marks to promote androgen-receptor-dependent transcription.](#)

Metzger E, Wissmann M, Yin N, Muller JM, Schneider R, Peters AH, Gunther T, Buettner R, Schule R.

Nature 2005 Sep; 437(7057):436.

Application: ChIP, Re-ChIP, IP-WB, IHC-P, IF, Human, Mouse, Testis, Prostate, LNCaP, HeLa cells