

# NEFH monoclonal antibody, clone AH1

Catalog # MAB5386

Size 100 uL

## Applications

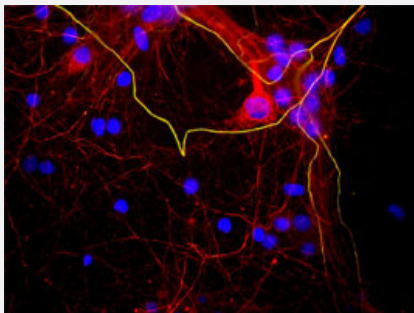


### Western Blot (Tissue lysate)

Strip blots of crude rat spinal cord extract stained with NEFH monoclonal antibody, clone AH1 (Cat # MAB5386).

All three antibodies bind to a prominent band with an apparent SDS-PAGE molecular weight of 200 KDa.

### Immunofluorescence



Mixed neuron/glia cultures stained with NEFH monoclonal antibody, clone AH1 (Cat # MAB5386) (green) and also stained with rabbit neurofilament NF-L polyclonal antibody (red).

The NF-L antibody stains neurofilaments in both axons and dendrites, and so can reveal neuronal cell bodies, while NEFH monoclonal antibody, clone AH1 (Cat # MAB5386) binds to only heavily phosphorylated forms of NF-H which are localized to mature axonal neurofilaments.

In this image a few axons course from left to right and top to bottom- since they contain both NF-L and phosphorylated NF-H they appear golden in color. Blue shows the distribution of DNA.

## Specification

Product Description	Mouse monoclonal antibody raised against NEFH.
Immunogen	Bovine NEFH.
Host	Mouse
Theoretical MW (kDa)	200-220

Reactivity	Bovine
Form	Liquid
Isotype	IgG1
Recommend Usage	Western Blot (1:10000) Immunofluorescence (1:1000) The optimal working dilution should be determined by the end user.
Storage Buffer	In ascites (5 mM sodium azide)
Storage Instruction	Store at -20°C. Aliquot to avoid repeated freezing and thawing.
Note	This product contains sodium azide: a POISONOUS AND HAZARDOUS SUBSTANCE which should be handled by trained staff only.

## Applications

- Western Blot (Tissue lysate)

Strip blots of crude rat spinal cord extract stained with NEFH monoclonal antibody, clone AH1 (Cat # MAB5386).  
All three antibodies bind to a prominent band with an apparent SDS-PAGE molecular weight of 200 KDa.

- Immunohistochemistry

- Immunofluorescence

Mixed neuron/glia cultures stained with NEFH monoclonal antibody, clone AH1 (Cat # MAB5386) (green) and also stained with rabbit neurofilament NF-L polyclonal antibody (red).

The NF-L antibody stains neurofilaments in both axons and dendrites, and so can reveal neuronal cell bodies, while NEFH monoclonal antibody, clone AH1 (Cat # MAB5386) binds to only heavily phosphorylated forms of NF-H which are localized to mature axonal neurofilaments.

In this image a few axons course from left to right and top to bottom- since they contain both NF-L and phosphorylated NF-H they appear golden in color.

Blue shows the distribution of DNA.

- Enzyme-linked Immunoabsorbent Assay

## Publication Reference

- [A molecular dissection of the carboxyterminal tails of the major neurofilament subunits NF-M and NF-H.](#)

Harris J, Ayyub C, Shaw G.

Journal of Neuroscience Research 1991 Sep; 30(1):47.