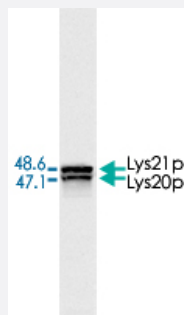


LYS20/LYS21 monoclonal antibody, clone 31F5

Catalog # MAB5385

Size 500 uL

Applications



Western Blot (Cell lysate)

Western blots of whole yeast protein extracts with LYS20/LYS21 monoclonal antibody, clone 31F5 (Cat # MAB5385).

Specification

Product Description	Mouse monoclonal antibody raised against LYS20/LYS21.
Immunogen	Nuclear protein from yeast.
Host	Mouse
Theoretical MW (kDa)	47.1, 48.6
Reactivity	Yeast
Form	Liquid
Isotype	IgG1
Recommend Usage	Western Blot (1:10000) Immunofluorescence (1:1000) The optimal working dilution should be determined by the end user.
Storage Buffer	In tissue culture supernatant (5 mM sodium azide)
Storage Instruction	Store at -20°C. Aliquot to avoid repeated freezing and thawing.

Note

This product contains sodium azide: a POISONOUS AND HAZARDOUS SUBSTANCE which should be handled by trained staff only.

Applications

- Western Blot (Cell lysate)

Western blots of whole yeast protein extracts with LYS20/LYS21 monoclonal antibody, clone 31F5 (Cat # MAB5385).

- Immunohistochemistry

- Immunofluorescence

- Enzyme-linked Immunoabsorbent Assay

Gene Info — LYS20

Entrez GeneID	851346
---------------	------------------------

Protein Accession#	YDL182W (Gene ID : 851346);YDL131W (Gene ID : 851425)
--------------------	---

Gene Name	LYS20
-----------	-------

Gene Alias	-
------------	---

Gene Description	Homocitrate synthase isozyme, catalyzes the condensation of acetyl-CoA and alpha-ketoglutarate to form homocitrate, which is the first step in the lysine biosynthesis pathway; highly similar to the other isozyme, Lys21p
------------------	---

Gene Ontology	Hyperlink
---------------	---------------------------

Gene Summary	-
--------------	---

Other Designations	Lys20p
--------------------	--------

Gene Info — LYS21

Entrez GeneID	851425
---------------	------------------------

Protein Accession#	YDL182W (Gene ID : 851346);YDL131W (Gene ID : 851425)
--------------------	---

Gene Name	LYS21
-----------	-------

Gene Alias	-
Gene Description	Homocitrate synthase isozyme, catalyzes the condensation of acetyl-CoA and alpha-ketoglutarate to form homocitrate, which is the first step in the lysine biosynthesis pathway; highly similar to the other isozyme, Lys20p
Gene Ontology	Hyperlink
Gene Summary	-
Other Designations	Lys21p

Publication Reference

- [Homocitrate synthase is located in the nucleus in the yeast *Saccharomyces cerevisiae*.](#)

Chen S, Brockenbrough JS, Dove JE, Aris JP.

The Journal of Biological Chemistry 1997 Apr; 272(16):10839.

Application: IF, WB, Yeast, Yeast cells