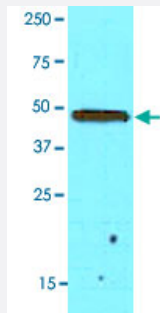


GAS7 monoclonal antibody, clone AT4H8

Catalog # MAB5376

Size 100 uL

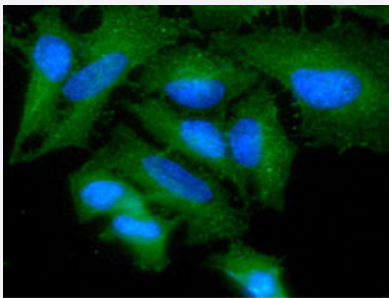
Applications



Western Blot (Tissue lysate)

Western blot analysis of mouse brain extracts (50 ug) were resolved by SDS-PAGE, transferred to NC membrane and probed with GAS7 monoclonal antibody, clone AT4H8 (Cat # MAB5376) (1 : 500).

Proteins were visualized using a goat anti-mouse secondary antibody conjugated to HRP and an ECL detection system.



Immunofluorescence

Immunofluorescence analysis of HeLa cells line, stained with DAPI (Blue) for nucleus staining and GAS7 monoclonal antibody, clone AT4H8 (1:100) with goat anti-mouse IgG-Alexa fluor 488 conjugate (Green).

Specification

| | |
|----------------------------|---|
| Product Description | Mouse monoclonal antibody raised against partial recombinant GAS7. |
| Immunogen | Recombinant protein corresponding to amino acids 1-416 of human GAS7. |
| Host | Mouse |
| Reactivity | Human, Mouse |
| Form | Liquid |
| Purification | Protein G purification |
| Isotype | IgG1, kappa |

| | |
|-------------------------|--|
| Quality Control Testing | Antibody Reactive Against Recombinant Protein. |
| Recommend Usage | ELISA Immunocytochemistry Immunofluorescence Western Blot The optimal working dilution should be determined by the end user. |
| Storage Buffer | In PBS, pH 7.4 (10% glycerol, 0.02% sodium azide). |
| Storage Instruction | Store at 2°C to 8°C for 1 week. For long term storage, aliquot and store at -20°C to -80°C. Aliquot to avoid repeated freezing and thawing. |
| Note | This product contains sodium azide: a POISONOUS AND HAZARDOUS SUBSTANCE which should be handled by trained staff only. |

Applications

- Western Blot (Tissue lysate)

Western blot analysis of mouse brain extracts (50 ug) were resolved by SDS-PAGE, transferred to NC membrane and probed with GAS7 monoclonal antibody, clone AT4H8 (Cat # MAB5376) (1 : 500).

Proteins were visualized using a goat anti-mouse secondary antibody conjugated to HRP and an ECL detection system.

- Immunocytochemistry

- Immunofluorescence

Immunofluorescence analysis of HeLa cells line, stained with DAPI (Blue) for nucleus staining and GAS7 monoclonal antibody, clone AT4H8 (1:100) with goat anti-mouse IgG-Alexa fluor 488 conjugate (Green).

- Enzyme-linked Immunoabsorbent Assay

Gene Info — GAS7

| | |
|--------------------|-----------------------------|
| Entrez GeneID | 8522 |
| Protein Accession# | NP_958836 |
| Gene Name | GAS7 |
| Gene Alias | KIAA0394, MGC1348, MLL/GAS7 |
| Gene Description | growth arrest-specific 7 |
| Omim ID | 603127 |

Gene Ontology

[Hyperlink](#)

Gene Summary

Growth arrest-specific 7 is expressed primarily in terminally differentiated brain cells and predominantly in mature cerebellar Purkinje neurons. GAS7 plays a putative role in neuronal development. Several transcript variants encoding proteins which vary in the N-terminus have been described. [provided by RefSeq

Other Designations

MLL/GAS7 fusion protein

Publication Reference

- [Human Gas7 isoforms homologous to mouse transcripts differentially induce neurite outgrowth.](#)

Chao CC, Chang PY, Lu HH.

Journal of Neuroscience Research 2005 Jul; 81(2):153.

Application: WB-Tr, Human, Neuro-2a cells

- [Association of the growth-arrest-specific protein Gas7 with F-actin induces reorganization of microfilaments and promotes membrane outgrowth.](#)

She BR, Liou GG, Lin-Chao S.

Experimental Cell Research 2002 Feb; 273(1):34.

Application: IF, WB-Ce, Mouse, NIH/3T3 cells

Disease

- [Cardiovascular Diseases](#)
- [Cerebral Hemorrhage](#)
- [Colitis](#)
- [Diabetes Mellitus](#)
- [Edema](#)
- [Genetic Predisposition to Disease](#)
- [Hypertension](#)
- [Intracranial Hemorrhages](#)
- [Stroke](#)
- [Subarachnoid Hemorrhage](#)

- [Tobacco Use Disorder](#)