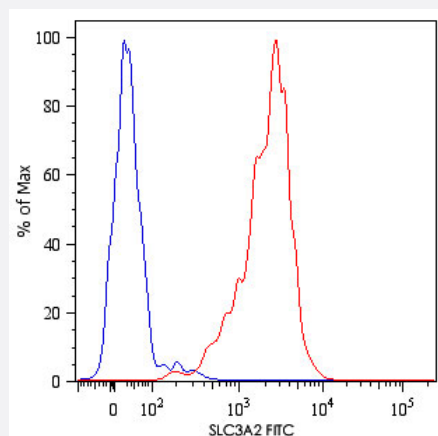


SLC3A2 monoclonal antibody, clone MEM-108 (FITC)

Catalog # MAB5041 Size 100 Reactions

Applications



Flow Cytometry

urface staining of human peripheral blood cells with SLC3A2 monoclonal antibody, clone MEM-108 (FITC) (Cat # MAB5041). Cells in the monocyte gate were used for analysis.

Specification

Product Description	Mouse monoclonal antibody raised against native SLC3A2.
Immunogen	Native purified SLC3A2 from Raji Burkitt's lymphoma cell line.
Host	Mouse
Theoretical MW (kDa)	125
Reactivity	Human
Specificity	This antibody reacts with CD98, a 125 KDa disulfide-linked heterodimer (80 KDa glycosylated heavy chain + 45 KDa non-glykoslated light chain).
Form	Liquid
Conjugation	FITC
Isotype	IgG1

Recommend Usage	Flow Cytometry (20 ul in human blood cells 100 ul in whole blood or 10 ⁶ cells in a suspension) The optimal working dilution should be determined by the end user.
Storage Buffer	In PBS (0.2% BSA, 0.09% sodium azide)
Storage Instruction	Store in the dark at 4°C. Do not freeze. Avoid prolonged exposure to light. Aliquot to avoid repeated freezing and thawing.
Note	This product contains sodium azide: a POISONOUS AND HAZARDOUS SUBSTANCE which should be handled by trained staff only.

Applications

- Flow Cytometry

Surface staining of human peripheral blood cells with SLC3A2 monoclonal antibody, clone MEM-108 (FITC) (Cat # MAB5041). Cells in the monocyte gate were used for analysis.

Gene Info — SLC3A2

Entrez GeneID	6520
Gene Name	SLC3A2
Gene Alias	4F2, 4F2HC, 4T2HC, CD98, CD98HC, MDU1, NACAE
Gene Description	solute carrier family 3 (activators of dibasic and neutral amino acid transport), member 2
Omim ID	158070
Gene Ontology	Hyperlink
Gene Summary	This gene is a member of the solute carrier family and encodes a cell surface, transmembrane protein with an alpha amylase domain. The protein exists as the heavy chain of a heterodimer, covalently bound through di-sulfide bonds to one of several possible light chains. It associates with integrins and mediates integrin-dependent signaling related to normal cell growth and tumorigenesis. Alternate transcriptional splice variants, encoding different isoforms, have been characterized. [provided by RefSeq]
Other Designations	4F2 cell-surface antigen heavy chain 4F2 heavy chain CD98 heavy chain antigen defined by monoclonal antibody 4F2, heavy chain antigen identified by monoclonal antibodies 4F2, TRA1.10, TROP4, and T43 heavy chain lymphocyte activation antigen 4F2 large subu

Publication Reference

- [Differential effect of cross-linking the CD98 heavy chain on fusion and amino acid transport in the human placental trophoblast \(BeWo\) cell line.](#)

Dalton P, Christian HC, Redman CW, Sargent IL, Boyd CA.

Biochimica et Biophysica Acta 2007 Mar; 1768(3):401.

Application: Flow Cyt, IEM, Human, Human placental trophoblast (BeWo) cell line

- [CD98 modulates integrin beta1 function in polarized epithelial cells.](#)

Cai S, Bulus N, Fonseca-Siesser PM, Chen D, Hanks SK, Pozzi A, Zent R.

Journal of Cell Science 2005 Mar; 118(Pt 5):889.

Application: Flow Cyt, Mouse, Immortalized mouse inner medullary collecting duct (IMCD) cells

- [CD98-dependent homotypic aggregation is associated with translocation of protein kinase Cdelta and activation of mitogen-activated protein kinases.](#)

Cho JY, Skubitz KM, Katz DR, Chain BM.

Experimental Cell Research 2003 May; 286(1):1.

Disease

- [Cardiovascular Diseases](#)
- [Diabetes Mellitus](#)
- [Edema](#)
- [Lymphoma](#)
- [Multiple Myeloma](#)