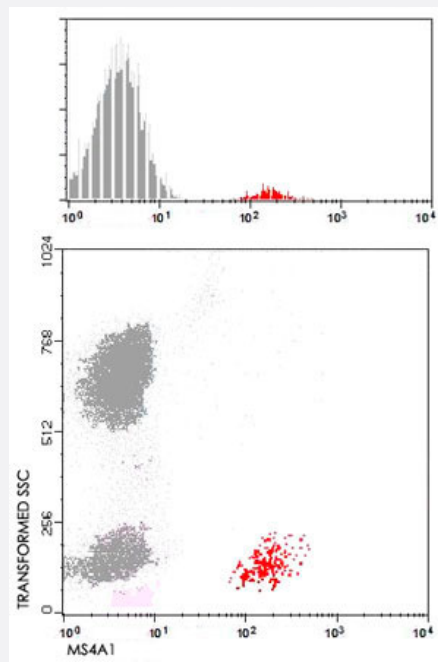


# MS4A1 monoclonal antibody, clone BC1

Catalog # MAB4973      Size 100 ug

## Applications



### Flow Cytometry

Flow Cytometry using human peripheral blood cells (1 ug/10<sup>6</sup> cells).  
FACSCalibur (Becton Dickinson, San Jose, CA) flow cytometer, using Cell Quest acquisition software and PAINT-A-GATE. PRO, analysis software.

## Specification

<b>Product Description</b>	Mouse monoclonal antibody raised against MS4A1.
<b>Immunogen</b>	Normal human lymphocytes from lymph node.
<b>Host</b>	Mouse
<b>Reactivity</b>	Human
<b>Form</b>	Liquid
<b>Purification</b>	Protein A/G purification
<b>Isotype</b>	IgM

<b>Recommend Usage</b>	Flow Cytometry (20 $\mu$ L/ $10^6$ cells) The optimal working dilution should be determined by the end user.
<b>Storage Buffer</b>	In buffer containing 1% BSA, pH 7.2 (0.09% sodium azide).
<b>Storage Instruction</b>	Store at -20°C. Aliquot to avoid repeated freezing and thawing.
<b>Note</b>	This product contains sodium azide: a POISONOUS AND HAZARDOUS SUBSTANCE which should be handled by trained staff only.

## Applications

- Immunohistochemistry
- Immunofluorescence
- Flow Cytometry

Flow Cytometry using human peripheral blood cells (1  $\mu$ g/ $10^6$  cells).

FACSCalibur (Becton Dickinson, San Jose, CA) flow cytometer, using Cell Quest acquisition software and PAINT-A-GATE. PRO, analysis software.

## Gene Info — MS4A1

<b>Entrez GeneID</b>	<a href="#">931</a>
<b>Gene Name</b>	MS4A1
<b>Gene Alias</b>	B1, Bp35, CD20, LEU-16, MGC3969, MS4A2, S7
<b>Gene Description</b>	membrane-spanning 4-domains, subfamily A, member 1
<b>Omim ID</b>	<a href="#">112210</a>
<b>Gene Ontology</b>	<a href="#">Hyperlink</a>
<b>Gene Summary</b>	This gene encodes a member of the membrane-spanning 4A gene family. Members of this nascent protein family are characterized by common structural features and similar intron/exon splice boundaries and display unique expression patterns among hematopoietic cells and nonlymphoid tissues. This gene encodes a B-lymphocyte surface molecule which plays a role in the development and differentiation of B-cells into plasma cells. This family member is localized to 11q12, among a cluster of family members. Alternative splicing of this gene results in two transcript variants which encode the same protein. [provided by RefSeq]
<b>Other Designations</b>	B-lymphocyte cell-surface antigen B1 CD20 antigen CD20 receptor

## Publication Reference

- [Bone marrow stroma-derived prolactin is involved in basal and platelet-activating factor-stimulated in vitro erythropoiesis.](#)

Bellone G, Astarita P, Artusio E, Silvestri S, Mareschi K, Turletti A, Buttiglieri S, Emanuelli G, Matera L.

Blood 1997 Jul; 90(1):21.

Application: Treated, Recombinant protein

## Pathway

- [Hematopoietic cell lineage](#)

## Disease

- [Breast cancer](#)
- [Breast Neoplasms](#)
- [Genetic Predisposition to Disease](#)
- [Lymphoma](#)
- [Neoplasm Recurrence](#)
- [Ovarian cancer](#)