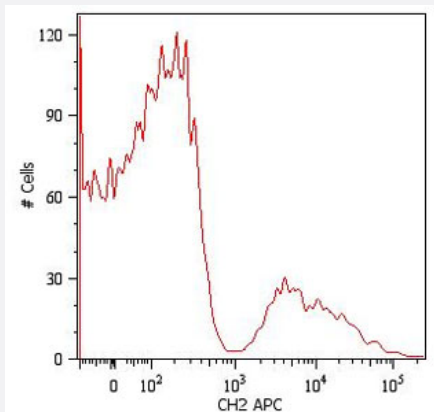


IgM monoclonal antibody, clone CH2 (APC)

Catalog # MAB4495 Size 100 ug

Applications



Flow Cytometry

Surface staining of human peripheral blood cells with IgM monoclonal antibody, clone CH2 (APC) (Cat # MAB4495).

Cells in the lymphocyte gate were used for analysis.

Specification

Product Description	Mouse monoclonal antibody raised against IgM.
Immunogen	Human IgM.
Host	Mouse
Reactivity	Human
Specificity	This antibody reacts with Fc fragment of human IgM.
Form	Liquid
Conjugation	APC
Concentration	0.1 mg/mL
Isotype	IgG1
Recommend Usage	Flow Cytometry (2 ug/mL) The optimal working dilution should be determined by the end user.

Storage Buffer	In PBS (0.2% BSA, 0.09% sodium azide)
Storage Instruction	Store in the dark at 4°C. Do not freeze. Avoid prolonged exposure to light. Aliquot to avoid repeated freezing and thawing.
Note	This product contains sodium azide: a POISONOUS AND HAZARDOUS SUBSTANCE which should be handled by trained staff only.

Applications

- Western Blot
- Immunocytochemistry
- Enzyme-linked Immunoabsorbent Assay
- Flow Cytometry

Surface staining of human peripheral blood cells with IgM monoclonal antibody, clone CH2 (APC) (Cat # MAB4495). Cells in the lymphocyte gate were used for analysis.

Publication Reference

- [T cell-dependent differentiation of human B cells into IgM, IgG, IgA, or IgE plasma cells: high rate of antibody production by IgE plasma cells, but limited clonal expansion of IgE precursors.](#)

Brinkmann V, Heusser CH.

Cellular Immunology 1993 Dec; 152(2):323.

- [Serological abnormalities in juvenile chronic arthritis: a review of 46 cases.](#)

Balogh Z, Meretey K, Falus A, Bozsoky S.

Annals of the Rheumatic Diseases 1980 Apr; 39(2):129.

- [Serum immunoglobulins after surgical operation.](#)

Fuller JM, Keyser JW.

Clinical Chemistry 1975 May; 21(6):667.