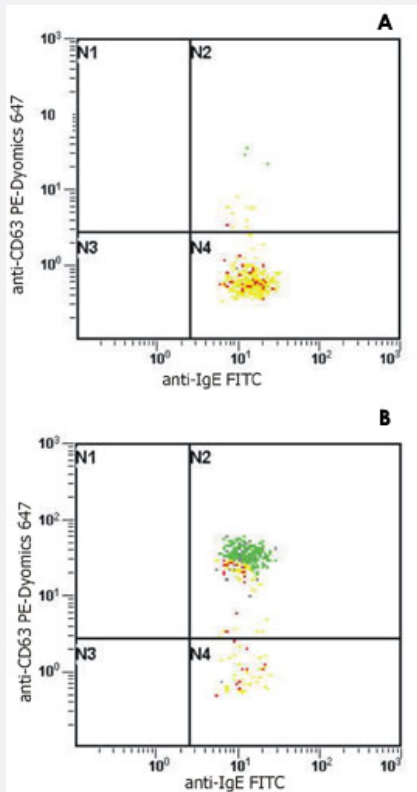


IgE monoclonal antibody, clone BE5 (FITC)

Catalog # MAB4491 Size 100 ug

Applications



Flow Cytometry

Flow Cytometry analysis of basophil activation upon stimulation of normal (heparin-treated) whole blood with combination of IL-3 and Goat anti-IgE polyclonal antibody.

Combination of IgE monoclonal antibody, clone BE5 (FITC) (Cat # MAB4491) and IgE monoclonal antibody, clone BE5 (PE) (Cat # MAB4492)-Dyomics 647 was used (analysis in basophil wIDO1w).

Fig. A - staining of non-stimulated (control) sample.

Fig. B - staining of IgE stimulated sample.

Specification

Product Description	Mouse monoclonal antibody raised against IgE.
Immunogen	Human IgE.
Host	Mouse
Reactivity	Human
Specificity	This antibody reacts with human IgE; it recognizes an epitope different from the ones recognized by MAB6451 and MAB6452 antibodies to IgE.

Form	Liquid
Conjugation	FITC
Concentration	0.1 mg/mL
Isotype	IgG
Recommend Usage	Flow Cytometry (5 ug/mL) The optimal working dilution should be determined by the end user.
Storage Buffer	In PBS (0.2% BSA, 0.09% sodium azide)
Storage Instruction	Store in the dark at 4°C. Do not freeze. Avoid prolonged exposure to light. Aliquot to avoid repeated freezing and thawing.
Note	This product contains sodium azide: a POISONOUS AND HAZARDOUS SUBSTANCE which should be handled by trained staff only.

Applications

- Enzyme-linked Immunoabsorbent Assay
- Flow Cytometry

Flow Cytometry analysis of basophil activation upon stimulation of normal (heparin-treated) whole blood with combination of IL-3 and Goat anti-IgE polyclonal antibody.

Combination of IgE monoclonal antibody, clone BE5 (FITC) (Cat # MAB4491) and IgE monoclonal antibody, clone BE5 (PE) (Cat # MAB4492)-Dyomics 647 was used (analysis in basophil wIDO1w).

Fig. A - staining of non-stimulated (control) sample.

Fig. B - staining of IgE stimulated sample.

Publication Reference

- [IgE isotype determination: epsilon-germline gene transcription, DNA recombination and B-cell differentiation.](#)

H J Gould, R L Beavil, D Vercelli.

British Medical Bulletin 2000 Jan; 56(4):908.

Application: Flow Cyt, Human, Human B cells

- [T cell-dependent differentiation of human B cells into IgM, IgG, IgA, or IgE plasma cells: high rate of antibody production by IgE plasma cells, but limited clonal expansion of IgE precursors.](#)

Brinkmann V, Heusser CH.

Cellular Immunology 1993 Dec; 152(2):323.

- [Serological abnormalities in juvenile chronic arthritis: a review of 46 cases.](#)

Balogh Z, Meretey K, Falus A, Bozsoky S.

Annals of the Rheumatic Diseases 1980 Apr; 39(2):129.