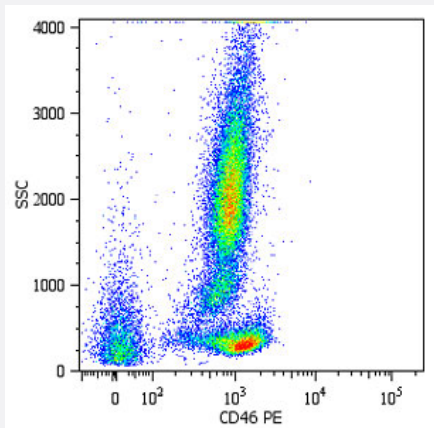


CD46 monoclonal antibody, clone MEM-258 (PE)

Catalog # MAB4442 Size 100 Reactions

Applications



Flow Cytometry

Surface staining of human peripheral blood cells with CD46 monoclonal antibody, clone MEM-258 (PE) (Cat # MAB4442).

Specification

Product Description	Mouse monoclonal antibody raised against native CD46.
Immunogen	Native purified CD46 from human T cell line HPB-ALL.
Host	Mouse
Theoretical MW (kDa)	56-66
Reactivity	Bovine, Human
Specificity	This antibody recognizes an epitope on SCR4 (the membrane-proximal SCR) domain of CD46 (Membrane cofactor protein). CD46 is 56-66 KDa dimeric transmembrane protein expressed on T and B lymphocytes, platelets, monocytes, granulocytes, endothelial cells, epithelial cells and fibroblast; it is negative on erythrocytes.
Form	Liquid
Conjugation	PE
Isotype	IgG1

Recommend Usage	Flow Cytometry (20 ul in human blood cells 100 ul in whole blood or 10 ⁶ cells in a suspension) The optimal working dilution should be determined by the end user.
Storage Buffer	In PBS (0.2% BSA, 0.09% sodium azide)
Storage Instruction	Store in the dark at 4°C. Do not freeze. Avoid prolonged exposure to light. Aliquot to avoid repeated freezing and thawing.
Note	This product contains sodium azide: a POISONOUS AND HAZARDOUS SUBSTANCE which should be handled by trained staff only.

Applications

- Western Blot
- Immunoprecipitation
- Flow Cytometry

Surface staining of human peripheral blood cells with CD46 monoclonal antibody, clone MEM-258 (PE) (Cat # MAB4442).

Gene Info — CD46

Entrez GeneID	4179
Gene Name	CD46
Gene Alias	MCP, MGC26544, MIC10, TLX, TRA2.10
Gene Description	CD46 molecule, complement regulatory protein
Omim ID	120920 235400
Gene Ontology	Hyperlink

Gene Summary	The protein encoded by this gene is a type I membrane protein and is a regulatory part of the complement system. The encoded protein has cofactor activity for inactivation of complement components C3b and C4b by serum factor I, which protects the host cell from damage by complement. In addition, the encoded protein can act as a receptor for the Edmonston strain of measles virus, human herpesvirus-6, and type IV pili of pathogenic Neisseria. Finally, the protein encoded by this gene may be involved in the fusion of the spermatozoa with the oocyte during fertilization. This gene is found in a cluster on chromosome 1q32 with other genes encoding structural components of the complement system. At least fourteen different transcript variants encoding fourteen different isoforms have been found for this gene. [provided by RefSeq]
--------------	---

Other Designations

CD46 antigen, complement regulatory protein|OTTHUMP00000034577|OTTHUMP00000034622|OTTHUMP00000034623|OTTHUMP00000034624|OTTHUMP00000034625|OTTHUMP00000034626|OTTHUMP00000034706|antigen identified by monoclonal antibody TRA-2-10|complement membrane cofactor

Publication Reference

- [Ligation of the cell surface receptor, CD46, alters T cell polarity and response to antigen presentation.](#)

Oliaro J, Pasam A, Waterhouse NJ, Browne KA, Ludford-Menting MJ, Trapani JA, Russell SM.

PNAS 2006 Nov; 103(49):18685.

- [Emerging roles and new functions of CD46.](#)

Liszewski MK, Kemper C, Price JD, Atkinson JP.

Springer Seminars in Immunopathology 2005 Nov; 27(3):345.

- [CD46 is a cellular receptor for group B adenoviruses.](#)

Gaggar A, Shayakhmetov DM, Lieber A.

Nature Medicine 2003 Oct; 9(11):1408.

Pathway

- [Complement and coagulation cascades](#)

Disease

- [Abortion](#)
- [Birth Weight](#)
- [Genetic Predisposition to Disease](#)
- [Glioblastoma](#)
- [Glioma](#)
- [Hemolytic-Uremic Syndrome](#)
- [Leukemia](#)

- [Lymphoma](#)
- [Macular Degeneration](#)
- [Meningeal Neoplasms](#)
- [Meningioma](#)
- [Recurrence](#)