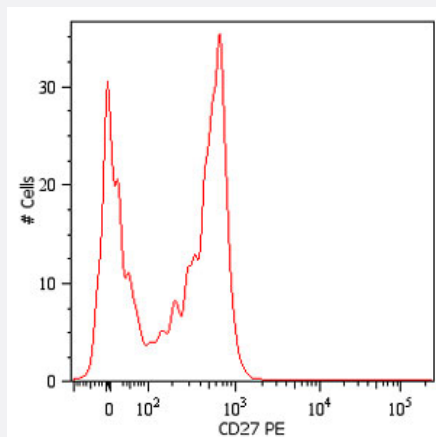


# CD27 monoclonal antibody, clone LT27 (PE)

Catalog # MAB4400      Size 100 Reactions

## Applications



### Flow Cytometry

Surface staining of human peripheral blood cells with CD27 monoclonal antibody, clone LT27 (PE) (Cat # MAB4400). Cells in the lymphocyte gate were used for analysis.

## Specification

<b>Product Description</b>	Mouse monoclonal antibody raised against native CD27.
<b>Immunogen</b>	Native purified CD27 from human peripheral blood lymphocytes.
<b>Host</b>	Mouse
<b>Theoretical MW (kDa)</b>	50-55
<b>Reactivity</b>	Human
<b>Specificity</b>	This antibody reacts with CD27 (T14), a 50-55 kDa type I transmembrane glycoprotein (member of the TNF-receptor superfamily) expressed on medullary thymocytes, peripheral T lymphocytes, some B lymphocytes and NK cells.
<b>Form</b>	Liquid
<b>Conjugation</b>	PE
<b>Isotype</b>	IgG2a

Recommend Usage	Flow Cytometry (20 ul in human blood cells 100 ul in whole blood or 10 <sup>6</sup> cells in a suspension) The optimal working dilution should be determined by the end user.
Storage Buffer	In PBS (0.2% BSA, 0.09% sodium azide)
Storage Instruction	Store in the dark at 4°C. Do not freeze. Avoid prolonged exposure to light. Aliquot to avoid repeated freezing and thawing.
Note	This product contains sodium azide: a POISONOUS AND HAZARDOUS SUBSTANCE which should be handled by trained staff only.

## Applications

- Flow Cytometry

Surface staining of human peripheral blood cells with CD27 monoclonal antibody, clone LT27 (PE) (Cat # MAB4400). Cells in the lymphocyte gate were used for analysis.

## Gene Info — CD27

Entrez GeneID	<a href="#">939</a>
Gene Name	CD27
Gene Alias	MGC20393, S152, T14, TNFRSF7, Tp55
Gene Description	CD27 molecule
Omim ID	<a href="#">186711</a>
Gene Ontology	<a href="#">Hyperlink</a>
Gene Summary	The protein encoded by this gene is a member of the TNF-receptor superfamily. This receptor is required for generation and long-term maintenance of T cell immunity. It binds to ligand CD70, and plays a key role in regulating B-cell activation and immunoglobulin synthesis. This receptor transduces signals that lead to the activation of NF-kappaB and MAPK8/JNK. Adaptor proteins TRAF2 and TRAF5 have been shown to mediate the signaling process of this receptor. CD27-binding protein (SIVA), a proapoptotic protein, can bind to this receptor and is thought to play an important role in the apoptosis induced by this receptor. [provided by RefSeq]
Other Designations	CD27 antigen CD27L receptor T cell activation antigen CD27 T cell activation antigen S152 tumor necrosis factor receptor superfamily, member 7

## Publication Reference

- [Blockade of protease-activated receptors on T cells correlates with altered proteolysis of CD27 by gingipains of Porphyromonas gingivalis.](#)

Yun LW, Decarlo AA, Hunter N.

Clinical and Experimental Immunology 2007 Nov; 150(2):217.

- [Expression of soluble CD27 and interleukins-8 and -10 in B-cell chronic lymphocytic leukemia: correlation with disease stage and prognosis.](#)

Kara IO, Sahin B, Gunesacar R.

Advances in Therapy 2007 Jan; 24(1):29.

- [CD27 in B-cell chronic lymphocytic leukemia. Cellular expression, serum release and correlation with other soluble molecules belonging to nerve growth factor receptors \(NGFr\) superfamily.](#)

Molica S, Vitelli G, Levato D, Crispino G, Dell'Olio M, Dattilo A, Matera R, Gandolfo GM, Musto P.

Haematologica 1998 May; 83(5):398.

## Pathway

- [Cytokine-cytokine receptor interaction](#)

## Disease

- [Asthma](#)
- [Bronchial Hyperreactivity](#)
- [Genetic Predisposition to Disease](#)
- [Hematologic Diseases](#)
- [Kidney Failure](#)
- [Multiple Myeloma](#)
- [Occupational Diseases](#)