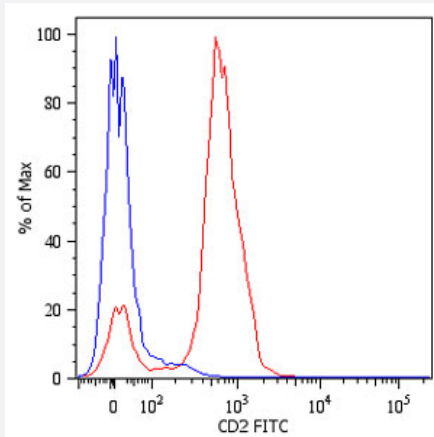


# CD2 monoclonal antibody, clone LT2 (FITC)

Catalog # MAB4382      Size 100 Reactions

## Applications



### Flow Cytometry

Surface staining of human peripheral blood cells with CD2 monoclonal antibody, clone LT2 (FITC) (Cat # MAB4382). Cells in the lymphocyte gate were used for analysis.

## Specification

<b>Product Description</b>	Mouse monoclonal antibody raised against native CD2.
<b>Immunogen</b>	Native purified CD2 from normal human blood lymphocytes.
<b>Host</b>	Mouse
<b>Theoretical MW (kDa)</b>	50
<b>Reactivity</b>	Human
<b>Specificity</b>	This antibody LT2 reacts with CD2, a 50 KDa glycoprotein present on the human peripheral blood T I lymphocytes and NK cells; also expressed by all thymocytes.
<b>Form</b>	Liquid
<b>Conjugation</b>	FITC
<b>Isotype</b>	IgG2a

<b>Recommend Usage</b>	Flow Cytometry (20 ul in human blood cells 100 ul in whole blood or 10 <sup>6</sup> cells in a suspension) The optimal working dilution should be determined by the end user.
<b>Storage Buffer</b>	In PBS (0.2% BSA, 0.09% sodium azide)
<b>Storage Instruction</b>	Store in the dark at 4°C. Do not freeze. Avoid prolonged exposure to light. Aliquot to avoid repeated freezing and thawing.
<b>Note</b>	This product contains sodium azide: a POISONOUS AND HAZARDOUS SUBSTANCE which should be handled by trained staff only.

## Applications

- Immunoprecipitation

- Flow Cytometry

Surface staining of human peripheral blood cells with CD2 monoclonal antibody, clone LT2 (FITC) (Cat # MAB4382). Cells in the lymphocyte gate were used for analysis.

## Gene Info — CD2

<b>Entrez GeneID</b>	<a href="#">914</a>
<b>Gene Name</b>	CD2
<b>Gene Alias</b>	SRBC, T11
<b>Gene Description</b>	CD2 molecule
<b>Omim ID</b>	<a href="#">186990</a>
<b>Gene Ontology</b>	<a href="#">Hyperlink</a>
<b>Gene Summary</b>	sheep red blood cell receptor OTTHUMP00000024366 OTTHUMP00000059318 lymphocyte-function antigen-2
<b>Other Designations</b>	CD2 antigen (p50), sheep red blood cell receptor OTTHUMP00000024366 OTTHUMP00000059318 lymphocyte-function antigen-2

## Publication Reference

- [CD2 deficiency partially prevents small bowel inflammation and improves parasite control in murine Toxoplasma gondii infection.](#)

Pawlowski NN, Struck D, Grollich K, Kuhl AA, Zeitz M, Liesenfeld O, Hoffmann JC.

World Journal of Gastroenterology 2007 Aug; 13(31):4207.

- [Mechanisms of Cellular Avidity Regulation in CD2-CD58-Mediated T Cell Adhesion.](#)

Zhu DM, Dustin ML, Cairo CW, Thatte HS, Golan DE.

ACS Chemical Biology 2006 Nov; 1(10):649.

- [\[A panel of monoclonal antibodies against human lymphocyte antigens\].](#)

Filatov AV, Bachurin PS, Markova NA, Surnakova NE.

Eksp Onkol 1989 Jan; 11(2):28.

## Pathway

- [Cell adhesion molecules \(CAMs\)](#)
- [Hematopoietic cell lineage](#)

## Disease

- [Arthritis](#)
- [Genetic Predisposition to Disease](#)