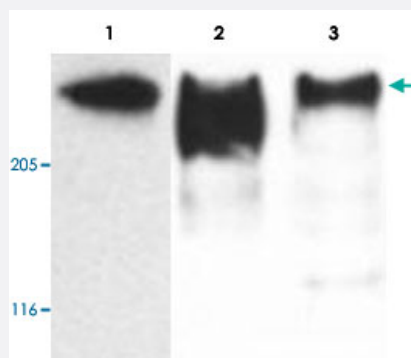


# MAP2 monoclonal antibody, clone MT-01

Catalog # MAB3866      Size 100 ug

## Applications



### Western Blot (Tissue lysate)

Western Blotting analysis (reducing conditions) of microtubules partially purified from porcine brain lysate.

Lane 1 : Immunostaining with MAP2 monoclonal antibody, clone MT-01 (Cat # MAB3866).

Lane 2 : Immunostaining with MAP2 monoclonal antibody, clone MT-07 (Cat # MAB3636).

Lane 3 : Immunostaining with MAP2 monoclonal antibody, clone MT-08 (Cat # MAB3637).

## Specification

<b>Product Description</b>	Mouse monoclonal antibody raised against full length native MAP2.
<b>Immunogen</b>	Native purified bovine MAP2.
<b>Host</b>	Mouse
<b>Reactivity</b>	Bovine, Cat, Human, Mouse, Pig
<b>Specificity</b>	This antibody reacts with molecule Microtubule Associated Protein 2ab (MAP2ab).
<b>Form</b>	Liquid
<b>Isotype</b>	IgG1
<b>Recommend Usage</b>	The optimal working dilution should be determined by the end user.
<b>Storage Buffer</b>	In PBS, pH 7.4 (0.09% sodium azide)
<b>Storage Instruction</b>	Store at 4°C. Do not freeze. Aliquot to avoid repeated freezing and thawing.

**Note**

This product contains sodium azide: a POISONOUS AND HAZARDOUS SUBSTANCE which should be handled by trained staff only.

## Applications

- Western Blot (Tissue lysate)

Western Blotting analysis (reducing conditions) of microtubules partially purified from porcine brain lysate.

Lane 1 : Immunostaining with MAP2 monoclonal antibody, clone MT-01 (Cat # MAB3866).

Lane 2 : Immunostaining with MAP2 monoclonal antibody, clone MT-07 (Cat # MAB3636).

Lane 3 : Immunostaining with MAP2 monoclonal antibody, clone MT-08 (Cat # MAB3637).

- Immunocytochemistry

- Immunoprecipitation

## Gene Info — MAP2

Entrez GeneID	<a href="#">281294</a>
---------------	------------------------

Gene Name	MAP2
-----------	------

Gene Alias	-
------------	---

Gene Description	microtubule-associated protein 2
------------------	----------------------------------

Gene Ontology	<a href="#">Hyperlink</a>
---------------	---------------------------

Other Designations	microtubule associated protein 2C
--------------------	-----------------------------------

## Publication Reference

- [Changes of MAP2 phosphorylation during brain development.](#)

Riederer BM, Draberova E, Viklicky V, Draber P.

The Journal of Histochemistry and Cytochemistry 1995 Dec; 43(12):1269.

Application: IHC, WB-Ti, Cat, Cat brains