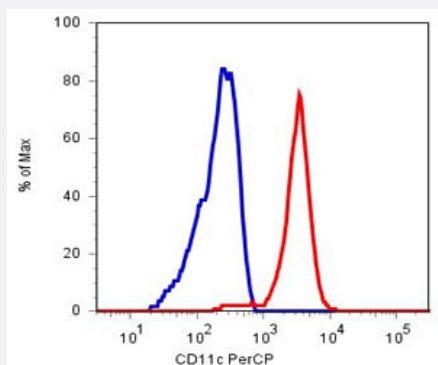


ITGAX monoclonal antibody, clone BU15

Catalog # MAB3864 Size 100 ug

Applications



Flow Cytometry

Surface staining of human peripheral blood cells with ITGAX monoclonal antibody, clone BU15 (Cat # MAB3864) conjugated with PerCP (monocyte gate).

Specification

Product Description	Mouse monoclonal antibody raised against native ITGAX.
Immunogen	Native purified ITGAX from human dendritic cells of synovial fluid.
Host	Mouse
Theoretical MW (kDa)	150
Reactivity	Dog, Human, Monkey
Specificity	This antibody reacts with CD11c (aX, p150), a 150 KDa integrin expressed mainly on dendritic cells and tissue macrophages.
Form	Liquid
Isotype	IgG1
Recommend Usage	The optimal working dilution should be determined by the end user.
Storage Buffer	In PBS, pH 7.4 (0.09% sodium azide)

Storage Instruction

Store at 4°C. Do not freeze.
Aliquot to avoid repeated freezing and thawing.

Note

This product contains sodium azide: a POISONOUS AND HAZARDOUS SUBSTANCE which should be handled by trained staff only.

Applications

- Immunohistochemistry (Frozen sections)
- Immunoprecipitation
- Flow Cytometry

Surface staining of human peripheral blood cells with ITGAX monoclonal antibody, clone BU15 (Cat # MAB3864) conjugated with PerCP (monocyte gate).

Gene Info — ITGAX

Entrez GeneID[3687](#)**Gene Name**

ITGAX

Gene Alias

CD11C, SLEB6

Gene Description

integrin, alpha X (complement component 3 receptor 4 subunit)

Omim ID[151510](#)**Gene Ontology**[Hyperlink](#)**Gene Summary**

This gene encodes the integrin alpha X chain protein. Integrins are heterodimeric integral membrane proteins composed of an alpha chain and a beta chain. This protein combines with the beta 2 chain (ITGB2) to form a leukocyte-specific integrin referred to as inactivated-C3b (iC3b) receptor 4 (CR4). The alpha X beta 2 complex seems to overlap the properties of the alpha M beta 2 integrin in the adherence of neutrophils and monocytes to stimulated endothelium cells, and in the phagocytosis of complement coated particles. [provided by RefSeq]

Other Designations

OTTHUMP00000163299|integrin alpha X|integrin, alpha X (antigen CD11C (p150), alpha polypeptide)|leu M5, alpha subunit|leukocyte surface antigen p150,95, alpha subunit|myeloid membrane antigen, alpha subunit|p150 95 integrin alpha chain

Publication Reference

- [Novel tools for functional analysis of CD11c: activation-specific, activation-independent, and activating antibodies.](#)

Sadhu C, Hendrickson L, Dick KO, Potter TG, Staunton DE.

Journal of Immunoassay & Immunochemistry 2008 Jan; 29(1):42.

Application: Func, Human, JY cells

- [Regulation of adhesion of AML14.3D10 cells by surface clustering of beta2-integrin caused by ERK-independent activation of cPLA2.](#)

Myou S, Zhu X, Boetticher E, Qin Y, Myo S, Meliton A, Lambertino A, Munoz NM, Hamann KJ, Leff AR.

Immunology 2002 Sep; 107(1):77.

Application: Func, Human, AML cells

- [Ligation of CD11b and CD11c beta\(2\) integrins by antibodies or soluble CD23 induces macrophage inflammatory protein 1alpha \(MIP-1alpha\) and MIP-1beta production in primary human monocytes through a pathway dependent on nuclear factor-kappaB.](#)

Rezzonico R, Imbert V, Chicheportiche R, Dayer JM.

Blood 2001 May; 97(10):2932.

Application: Func, Human, Human monocytes

- [A novel leukointegrin, alpha d beta 2, binds preferentially to ICAM-3.](#)

Van der Vieren M, Le Trong H, Wood CL, Moore PF, St John T, Staunton DE, Gallatin WM.

Immunity 1995 Dec; 3(6):683.

Application: Flow Cyt, IHC-Fr, Human, HL-60 cells, Human abdominal aorta, Human spleen

- [Canine neutrophil adhesion proteins and Fc-receptors in healthy dogs and dogs with adhesion protein deficiency, as studied by flow cytometry.](#)

Trowald-Wigh G, Johannisson A, Hakansson L.

Veterinary Immunology and Immunopathology 1993 Oct; 38(3-4):297.

Application: Flow Cyt, Dog, Human, Neutrophils

Pathway

- [Regulation of actin cytoskeleton](#)

Disease

- [Genetic Predisposition to Disease](#)
- [Helicobacter Infections](#)
- [Lupus Erythematosus](#)
- [Stomach Ulcer](#)