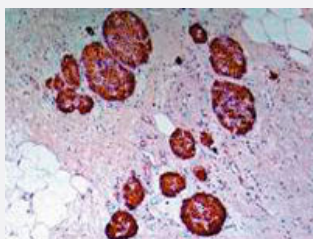


C-peptide monoclonal antibody, clone C-PEP-01

Catalog # MAB3849

Size 100 ug

Applications



Immunohistochemistry (Formalin/PFA-fixed paraffin-embedded sections)

Immunohistochemistry staining of human pancreas (paraffin-embedded sections) with C-peptide monoclonal antibody, clone C-PEP-01 (Cat # MAB3849).

Specification

Product Description	Mouse monoclonal antibody raised against synthetic peptide of C-peptide.
Immunogen	A synthetic peptide (conjugated with BSA) corresponding to human C-peptide.
Host	Mouse
Reactivity	Human
Specificity	This antibody reacts specifically with C-peptide, a part of the Proinsulin molecule. Proinsulin consists of the three parts: C-peptide and two long strands of amino acids (alpha and beta chains; later become linked together to form the Insulin molecule). No cross-reactivity with Insulin or other peptide hormones or proteins was observed.
Form	Liquid
Isotype	IgG1
Recommend Usage	The optimal working dilution should be determined by the end user.
Storage Buffer	In PBS, pH 7.4 (0.09% sodium azide)
Storage Instruction	Store at 4°C. Do not freeze. Aliquot to avoid repeated freezing and thawing.

Note

This product contains sodium azide: a POISONOUS AND HAZARDOUS SUBSTANCE which should be handled by trained staff only.

Applications

- Immunohistochemistry (Formalin/PFA-fixed paraffin-embedded sections)

Immunohistochemistry staining of human pancreas (paraffin-embedded sections) with C-peptide monoclonal antibody, clone C-PEP-01 (Cat # MAB3849).

- Immunocytochemistry
- Enzyme-linked Immunoabsorbent Assay
- Radioimmunoassay

Publication Reference

- [A monoclonal antibody applicable for determination of C-peptide of human proinsulin by RIA.](#)

Hilgert I, Stolba P, Kristofova H, Stefanova I, Bendlova B, Lebl M, Horejsi V.

Hybridoma 1991 Jun; 10(3):379.

Application: RIA, C-peptide fragments