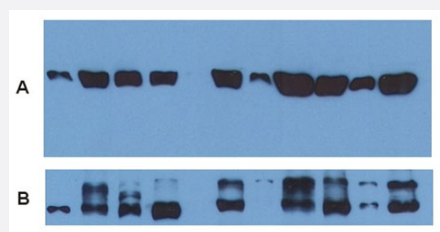


Tubulin-alpha monoclonal antibody, clone TU-01

Catalog # MAB3826

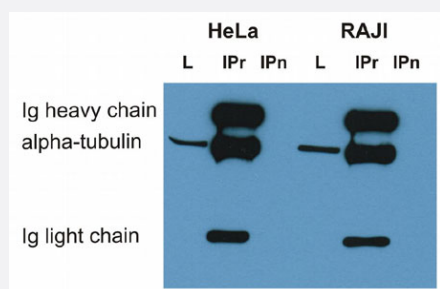
Size 100 ug

Applications



Western Blot (Cell lysate)

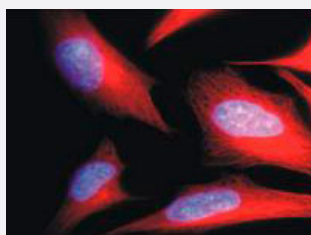
Use of alpha Tubulin monoclonal antibody, clone TU-01 (Cat # MAB3826) as a loading control (A) in an Western blotting experiment revealing the staining pattern of various cell lysates by a newly developed monoclonal antibody (B).



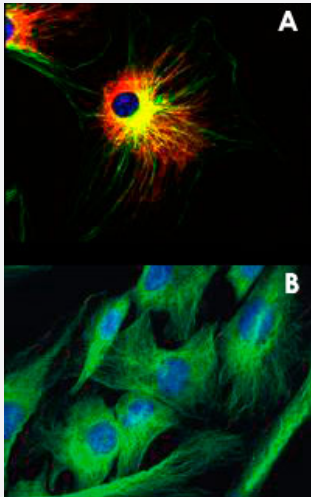
Western Blot (Cell lysate)

Immunoprecipitation of alpha-tubulin from HeLa and RAJI cell lysate by antibody TU-16 and its detection by antibody TU-01 (Cat # MAB3826). IgM heavy chain and IgM light chain (25-30 KDa) indicated. MW of alpha tubulin is around 50 KDa. L = lysate. IPr = immunoprecipitate (reducing conditions). IPn = immunoprecipitate (non-reducing conditions).

Immunofluorescence



Immunofluorescence staining of HeLa (human cervix carcinoma cell line) using alpha Tubulin monoclonal antibody, clone TU-01 (Cat # MAB3826 ; red). Nucleus is stained with DAPI (blue).



Immunofluorescence

Panel A : Immunofluorescence staining of NIH/3T3 (mouse embryonal fibroblast cell line) using alpha Tubulin monoclonal antibody, clone TU-01 (Cat # MAB3826 ; green) and VIM monoclonal antibody, clone VI-01 (Cat # MAB3880 ; red). Nucleus is stained with DAPI (blue).

Panel B : Immunofluorescence staining of NIH/3T3 (mouse embryonal fibroblast cell line) using alpha Tubulin monoclonal antibody, clone TU-01 (Cat # MAB3826 ; green). Nucleus is stained with DAPI (blue).

Specification

Product Description	Mouse monoclonal antibody raised against native Tubulin-alpha.
Immunogen	Native purified Tubulin-alpha from porcine brain alpha tubulin (two cycles of polymerization-depolymerization).
Host	Mouse
Reactivity	Pig
Specificity	This antibody recognizes the defined epitope (aa 65-97) on N-terminal structural domain of alpha-tubulin.
Form	Liquid
Isotype	IgG1
Recommend Usage	Flow Cytometry (1-4 ug/mL) Western Blot (1-2 ug/mL) The optimal working dilution should be determined by the end user.
Storage Buffer	In PBS, pH 7.4 (0.09% sodium azide)
Storage Instruction	Store at 4°C. Do not freeze. Aliquot to avoid repeated freezing and thawing.
Note	This product contains sodium azide: a POISONOUS AND HAZARDOUS SUBSTANCE which should be handled by trained staff only.

Applications

- Western Blot (Cell lysate)

Use of alpha Tubulin monoclonal antibody, clone TU-01 (Cat # MAB3826) as a loading control (A) in an Western blotting experiment revealing the staining pattern of various cell lysates by a newly developed monoclonal antibody (B).

- Western Blot (Cell lysate)

Immunoprecipitation of alpha-tubulin from HeLa and RAJI cell lysate by antibody TU-16 and its detection by antibody TU-01 (Cat # MAB3826).

IgM heavy chain and IgM light chain (25-30 KDa) indicated.

MW of alpha tubulin is around 50 KDa.

L = lysate. IP_r = immunoprecipitate (reducing conditions). IP_n = immunoprecipitate (non-reducing conditions).

- Immunohistochemistry (Formalin/PFA-fixed paraffin-embedded sections)

- Immunocytochemistry

- Immunofluorescence

Immunofluorescence staining of HeLa (human cervix carcinoma cell line) using alpha Tubulin monoclonal antibody, clone TU-01 (Cat # MAB3826 ; red). Nucleus is stained with DAPI (blue).

- Immunofluorescence

Panel A : Immunofluorescence staining of NIH/3T3 (mouse embryonal fibroblast cell line) using alpha Tubulin monoclonal antibody, clone TU-01 (Cat # MAB3826 ; green) and VIM monoclonal antibody, clone VI-01 (Cat # MAB3880 ; red). Nucleus is stained with DAPI (blue).

Panel B : Immunofluorescence staining of NIH/3T3 (mouse embryonal fibroblast cell line) using alpha Tubulin monoclonal antibody, clone TU-01 (Cat # MAB3826 ; green). Nucleus is stained with DAPI (blue).

Publication Reference

- [Dazap2 modulates transcription driven by the Wnt effector TCF-4.](#)

Lukas J, Mazna P, Valenta T, Doubravska L, Pospichalova V, Vojtechova M, Fafílek B, Ivanek R, Plachy J, Novak J, Korinek V.
Nucleic Acids Research 2009 Mar; 37(9):3007.

Application: WB-Tr, Human, Mouse, HEK 293 cells, Mouse C57MG

- [Complexes of gamma-tubulin with nonreceptor protein tyrosine kinases Src and Fyn in differentiating P19 embryonal carcinoma cells.](#)

Kukharskyy V, Sulimenko V, Macurek L, Sulimenko T, Draberova E, Draber P.
Experimental Cell Research 2004 Aug; 298(1):218.

Application: WB-Ce, Mouse , P19.X1 cells

- [Post-translational modifications and multiple tubulin isoforms in *Nicotiana tabacum* L. cells.](#)

Smertenko A, Blume Y, Viklicky V, Opatrny Z, Draber P.

Planta 1997 Jan; 201(3):349.

Application: IF, WB-Ce, Plant, *Nicotiana tabacum* L. cells