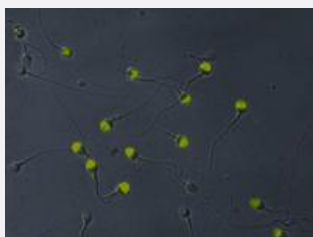


# VCP monoclonal antibody, clone Hs-14

Catalog # MAB3824      Size 100 ug

## Applications



### Immunofluorescence

Immunofluorescence analysis of 220 kDa intra-acrosomal protein in acetone-permeabilized human sperms using VCP monoclonal antibody, clone Hs-14 (Cat # MAB3824) (normal spermiogram).

## Specification

<b>Product Description</b>	Mouse monoclonal antibody raised against native purified ACRV1.
<b>Immunogen</b>	Native purified human VCP.
<b>Host</b>	Mouse
<b>Theoretical MW (kDa)</b>	220
<b>Reactivity</b>	Human, Mouse
<b>Specificity</b>	The antibody Hs-14 reacts with VCP (valosin-containing protein) a 220 kDa protein previously identified under the general name "intra-acrosomal protein".
<b>Form</b>	Liquid
<b>Isotype</b>	IgM
<b>Recommend Usage</b>	Immunocytochemistry (10 ug/mL) The optimal working dilution should be determined by the end user.
<b>Storage Buffer</b>	In PBS, pH 7.4 (0.09% sodium azide)
<b>Storage Instruction</b>	Store at 4°C. Do not freeze.

**Note**

This product contains sodium azide: a POISONOUS AND HAZARDOUS SUBSTANCE which should be handled by trained staff only.

## Applications

- Western Blot
- Immunocytochemistry
- Immunofluorescence

Immunofluorescence analysis of 220 kDa intra-acrosomal protein in acetone-permeabilized human sperms using VCP monoclonal antibody, clone Hs-14 (Cat # MAB3824) (normal spermiogram).

- Flow Cytometry

## Gene Info — VCP

**Entrez GeneID** [7415](#)

**Gene Name** VCP

**Gene Alias** IBMPFD, MGC131997, MGC148092, MGC8560, TERA, p97

**Gene Description** valosin-containing protein

**Omim ID** [167320 601023](#)

**Gene Ontology** [Hyperlink](#)

**Gene Summary** The protein encoded by this gene is a member of a family that includes putative ATP-binding proteins involved in vesicle transport and fusion, 26S proteasome function, and assembly of peroxisomes. This protein, as a structural protein, is associated with clathrin, and heat-shock protein Hsc70, to form a complex. It has been implicated in a number of cellular events that are regulated during mitosis, including homotypic membrane fusion, spindle pole body function, and ubiquitin-dependent protein degradation. [provided by RefSeq]

**Other Designations** transitional endoplasmic reticulum ATPase|yeast Cdc48p homolog

## Publication Reference

- [\[Significance of determination of intra-acrosomal proteins and sperm antibodies in human reproduction\].](#)

Pavlásek J, Peknicová J, Ulcová-Gallová Z, Nováková P, Reischig J, Micanová Z, Rokyta Z.

Ceska Gynekol 2004 Jul; 69(4):306.

- [Effect of an endocrine disruptor on mammalian fertility. Application of monoclonal antibodies against sperm proteins as markers for testing sperm damage.](#)

Peknicová J, Kyselová V, Buckiová D, Boubelík M.

American Journal of Reproductive Immunology 2002 May; 47(5):311.

Application: IF, WB-Ce, Dog, Human, Mouse, Sperm

## Disease

- [Amyotrophic Lateral Sclerosis](#)
- [Cardiovascular Diseases](#)
- [Dementia](#)
- [Diabetes Mellitus](#)
- [Edema](#)
- [Genetic Predisposition to Disease](#)