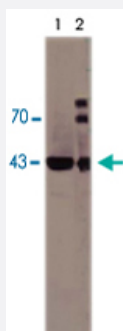


Serpine1 monoclonal antibody, clone H14H7

Catalog # MAB3808

Size 1 mg

Applications



Western Blot

Western Blot analysis of Serpine1 monoclonal antibody, clone H14H7 (Cat # MAB3808) at 10 ug/mL .

Secondary antibody : Goat Anti-Mouse Alk Phos 1 : 1000.

Lane 1 : Serpine1 at 0.5 ug.

Lane 2 : Serpine1 at 0.5 ug and PLAT at 0.5 ug.

Specification

Product Description	Mouse monoclonal antibody raised against recombinant Serpine1.
Immunogen	Recombinant protein corresponding to mouse Serpine1.
Host	Mouse
Reactivity	Mouse
Specificity	This IgG purified monoclonal antibody specific to Mouse PAI-1. It is available as an IgG fraction or with a biotin label.
Form	Liquid
Isotype	IgG
Recommend Usage	Western Blot (10 ug/mL) The optimal working dilution should be determined by the end user.
Storage Buffer	In 50 mM sodium phosphate buffer, 100 mM NaCl, pH 7.4
Storage Instruction	Store at -80°C. Aliquot to avoid repeated freezing and thawing.

Applications

- Western Blot

Western Blot analysis of Serpine1 monoclonal antibody, clone H14H7 (Cat # MAB3808) at 10 ug/mL .

Secondary antibody : Goat Anti-Mouse Alk Phos 1 : 1000.

Lane 1 : Serpine1 at 0.5 ug.

Lane 2 : Serpine1 at 0.5 ug and PLAT at 0.5 ug.

- Immunohistochemistry

- Enzyme-linked Immunoabsorbent Assay

Gene Info — Serpine1

Entrez GeneID	18787
Gene Name	Serpine1
Gene Alias	PAI-1, PAI1, Planh1
Gene Description	serine (or cysteine) peptidase inhibitor, clade E, member 1
Gene Ontology	Hyperlink
Gene Summary	clade E
Other Designations	Plasminogen activator inhibitor-1 precursor (PAI-1) (Endothelial plasminogen activator inhibitor) (PAI)nexin, plasminogen activator inhibitor type 1 plasminogen activator inhibitor, type I serine (or cysteine) proteinase inhibitor, clade E, member 1