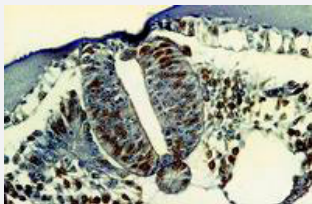


# 5-bromodeoxyuridine (BrdU) monoclonal antibody, clone MoBu-1

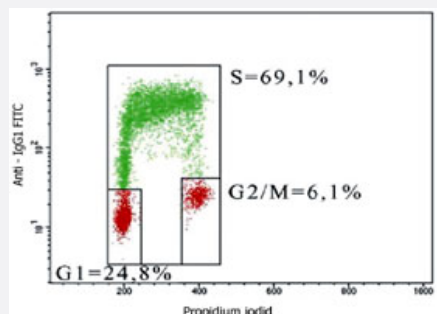
Catalog # MAB3635      Size 100 ug

## Applications



### Immunohistochemistry (Formalin/PFA-fixed paraffin-embedded sections)

Immunohistochemistry staining of bromodeoxyuridine-labeled cells (chick embryo ; paraffin-embedded sections) with 5-bromodeoxyuridine (BrdU) monoclonal antibody, clone MoBu-1 (Cat # MAB3635).



### Flow Cytometry

Flow cytometric analysis of 5-bromodeoxyuridine (BrdU) incorporation in CEM (human acute lymphoblastic leukemia cell line) using 5-bromodeoxyuridine (BrdU) monoclonal antibody, clone MoBu-1 (Cat # MAB3635) (detection by Goat anti-mouse IgG1 FITC).

The individual cell cycle phases (S-, G1-, G2/M-phase) are indicated in the figure.

## Specification

<b>Product Description</b>	Mouse monoclonal antibody raised against 5-bromodeoxyuridine (BrdU).
<b>Immunogen</b>	5-bromodeoxyuridine (BrdU) conjugated with Hemocyanin.
<b>Host</b>	Mouse
<b>Specificity</b>	This antibody reacts specifically with BrdU incorporated into DNA during S-phase of a cell cycle. This antibody is also useful for detecting proliferating cells by flowcytometry or immunofluorescence staining. It reacts also specifically with 5-bromouridine (BrU). Does not react with Edu.
<b>Form</b>	Liquid
<b>Concentration</b>	1 mg/mL

Isotype	IgG1
Recommend Usage	Immunocytochemistry (2 ug/mL) The optimal working dilution should be determined by the end user.
Storage Buffer	In PBS, pH 7.4 (0.09% sodium azide)
Storage Instruction	Store at 4°C. Do not freeze.
Note	This product contains sodium azide: a POISONOUS AND HAZARDOUS SUBSTANCE which should be handled by trained staff only.

## Applications

- Immunohistochemistry (Formalin/PFA-fixed paraffin-embedded sections)

Immunohistochemistry staining of bromodeoxyuridine-labeled cells (chick embryo ; paraffin-embedded sections) with 5-bromodeoxyuridine (BrdU) monoclonal antibody, clone MoBu-1 (Cat # MAB3635).

- Immunocytochemistry

- Flow Cytometry

Flow cytometric analysis of 5-bromodeoxyuridine (BrdU) incorporation in CEM (human acute lymphoblastic leukemia cell line) using 5-bromodeoxyuridine (BrdU) monoclonal antibody, clone MoBu-1 (Cat # MAB3635) (detection by Goat anti-mouse IgG1 FITC).

The individual cell cycle phases (S-, G1-, G2/M-phase) are indicated in the figure.

## Publication Reference

- [Pre-ribosomal RNA is processed in permeabilised cells at the site of transcription.](#)

Stanek D, Kiss T, Raska I.

European Journal of Cell Biology 2000 Mar; 79(3):202.

Application: IF, Human, HeLa cells

- [Induction of hyperplasia and increased DNA content in the uterus of immature rats exposed to coumestrol.](#)

Ashby J, Tinwell H, Soames A, Foster J.

Environmental Health Perspectives 1999 Oct; 107(10):819.

Application: IHC-P, Rat, Longitudinal sections of uterus

- [Hyperthermia in the chick embryo: HSP and possible mechanisms of developmental defects.](#)

Buckiova D, Kubinova L, Soukup A, Jelinek R, Brown NA.

The International Journal of Developmental Biology 1998 Jul; 42(5):737.