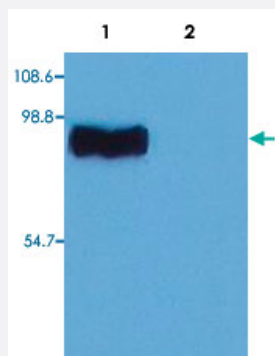


# STIM1 monoclonal antibody, clone CDN3H4

Catalog # MAB3602

Size 100 ug

## Applications

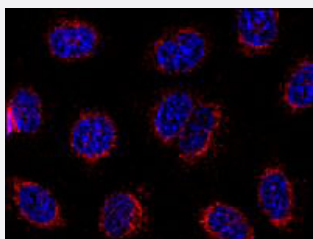


### Western Blot (Cell lysate)

Western Blotting analysis (non-reducing conditions) of whole cell lysate of RBL (rat basophilic leukemia cell line).

Lane 1 : Immunostaining with STIM1 monoclonal antibody, clone CDN3H4 (Cat # MAB3602).

Lane 2 : Immunostaining with Isotype mouse IgG1 control.



### Immunofluorescence

Immunofluorescence staining of HeLa cells using STIM1 monoclonal antibody, clone CDN3H4 (Cat # MAB3602). Preparation by methanol-aceton fixation and detection by Goat anti-mouse IgG1 Alexa Fluor® (red). Nuclei were stained with DAPI (blue).

## Specification

<b>Product Description</b>	Mouse monoclonal antibody raised against synthetic peptide of STIM1.
<b>Immunogen</b>	A synthetic peptide corresponding to C-terminus of STIM1.
<b>Host</b>	Mouse
<b>Theoretical MW (kDa)</b>	84
<b>Reactivity</b>	Human, Mouse, Rat
<b>Specificity</b>	This antibody reacts with human and rodent STIM1, a 84 KDa essential and conserved regulator of store-operated $Ca^{2+}$ channel function.

<b>Form</b>	Liquid
<b>Concentration</b>	1 mg/mL
<b>Isotype</b>	IgG1
<b>Recommend Usage</b>	Western Blot (1 ug/mL) Immunohistochemistry (Formalin/PFA-fixed paraffin-embedded sections) (5 ug/mL) The optimal working dilution should be determined by the end user.
<b>Storage Buffer</b>	In PBS, pH 7.4 (0.09% sodium azide)
<b>Storage Instruction</b>	Store at 4°C. Do not freeze.
<b>Note</b>	This product contains sodium azide: a POISONOUS AND HAZARDOUS SUBSTANCE which should be handled by trained staff only.

## Applications

- Western Blot (Cell lysate)

Western Blotting analysis (non-reducing conditions) of whole cell lysate of RBL (rat basophilic leukemia cell line).

Lane 1 : Immunostaining with STIM1 monoclonal antibody, clone CDN3H4 (Cat # MAB3602).

Lane 2 : Immunostaining with Isotype mouse IgG1 control.

- Immunohistochemistry (Formalin/PFA-fixed paraffin-embedded sections)

- Immunocytochemistry

- Immunofluorescence

Immunofluorescence staining of HeLa cells using STIM1 monoclonal antibody, clone CDN3H4 (Cat # MAB3602). Preparation by methanol-aceton fixation and detection by Goat anti-mouse IgG1 Alexa Fluor® (red). Nuclei were stained with DAPI (blue).

- Immunoprecipitation

## Publication Reference

- [Fluctuation in O-GlcNAcylation inactivates STIM1 to reduce store-operated calcium ion entry via downregulation of Ser621 phosphorylation.](#)

Atsuo Nomura, Shunichi Yokoe, Kiichiro Tomoda, Takatoshi Nakagawa, Francisco Javier Martin-Romero, Michio Asahi.

The Journal of Biological Chemistry 2020 Dec; 295(50):17071.

Application: IF, IP, WB-Ce, WB-Tr, Human, HEK 293 cells

- [STIM Protein-NMDA2 Receptor Interaction Decreases NMDA-Dependent Calcium Levels in Cortical Neurons.](#)

Gruszczynska-Biegala J, Strucinska K, Maciag F, Majewski L, Sladowska M, Kuznicki J.

Cells 2020 Jan; 9(1):E160.

Application: ICC, IF, Mouse, Rat, Cortical neurons

- [Expression of E-cadherin, beta-catenin and Ki-67 antigen and their reciprocal relationships in mammary adenocarcinomas in bitches.](#)

Nowak M, Madej JA, Dziegiel P.

Folia Histochemica et Cytobiologica 2007 Oct; 45(3):233.

- [Epstein-Barr virus, beta-catenin, and E-cadherin in gastric carcinomas.](#)

Jung IM, Chung JK, Kim YA, Kim JE, Heo SC, Ahn YJ, Hwang KT, Kim BG, Lee KL, Kim CW, Kim WH, Chang MS.

Journal of Korean Medical Science 2007 Oct; 22(5):855.

- [HIC1 attenuates Wnt signaling by recruitment of TCF-4 and beta-catenin to the nuclear bodies.](#)

Valenta T, Lukas J, Doubravska L, Fafulek B, Korinek V.

The EMBO Journal 2006 May; 25(11):2326.

- [HMG box transcription factor TCF-4's interaction with CtBP1 controls the expression of the Wnt target Axin2/Conductin in human embryonic kidney cells.](#)

Valenta T, Lukas J, Korinek V.

Nucleic Acids Research 2003 May; 31(9):2369.