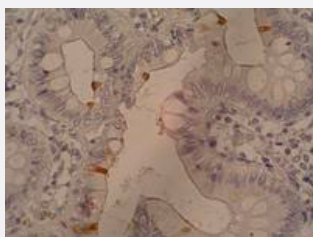


Sialyl Lewis a monoclonal antibody, clone 121SLE

Catalog # MAB3589

Size 100 ug

Applications



Immunohistochemistry (Formalin/PFA-fixed paraffin-embedded sections)

Immunohistochemistry staining of Sialyl Lewis a in human colorectal adenocarcinoma (paraffin-embedded sections) with Sialyl Lewis a monoclonal antibody, clone 121SLE (Cat # MAB3589).

Specification

Product Description Mouse monoclonal antibody raised against native Sialyl Lewis a.

Immunogen Native purified human Sialyl Lewis a.

Host Mouse

Reactivity Human

Specificity This antibody recognizes Sialyl Lewis a containing glycolipids.

Form Liquid

Concentration 1 mg/mL

Isotype IgM

Recommend Usage The optimal working dilution should be determined by the end user.

Storage Buffer In TBS, pH 8 (0.09% sodium azide)

Storage Instruction Store at 4°C. Do not freeze.

Note

This product contains sodium azide: a POISONOUS AND HAZARDOUS SUBSTANCE which should be handled by trained staff only.

Applications

- Immunohistochemistry (Formalin/PFA-fixed paraffin-embedded sections)

Immunohistochemistry staining of Sialyl Lewis a in human colorectal adenocarcinoma (paraffin-embedded sections) with Sialyl Lewis a monoclonal antibody, clone 121SLE (Cat # MAB3589).

- Enzyme-linked Immunoabsorbent Assay

Publication Reference

- [Summary report on the ISOBM TD-6 workshop: analysis of 20 monoclonal antibodies against Sialyl Lewis a and related antigens. Montreux, Switzerland, September 19-24, 1997.](#)

Rye PD, Bovin NV, Vlasova EV, Molodyk AA, Baryshnikov A, Kreutz FT, Garinther WI, Schultes BC, Noujaim AA, Madiyalakan R, Magnani J, Nilsson O, Nilsson K, Nustad K, Norum L, Bell H, Cao Y, Suresh MR, Very DL, Freeman JV, Yeung KK, Hilgers J. Tumour Biology 1998 Jan; 19(5):390.

Application: ELISA, Recombinant protein