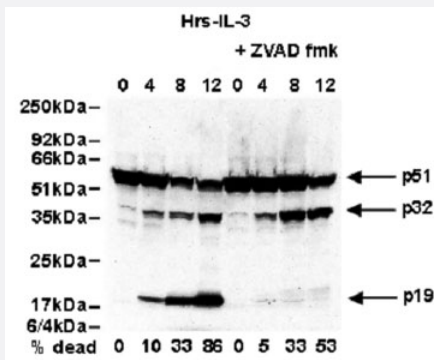


# CASP2 monoclonal antibody, clone 11B4

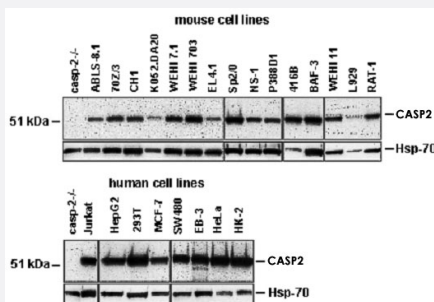
Catalog # MAB3485      Size 100 ug

## Applications



### Western Blot (Cell lysate)

Detection of pro-CASP2 (p51) , an intermediate cleavage product of CASP2 (p32) and activated CASP2 (p19) in FDC-P1 cells (mouse IL-3 dependent promyelocytic line) during growth factor with drawal induced apoptosis. Activation of CASP2 is inhibited in the presence of the caspase inhibitor Z-VAD-FMK.



### Western Blot

Western blot analysis of cell lysates from human and mouse cell lines with CASP2 monoclonal antibody, clone 11B4 (Cat # MAB3485). Clone 11B4 demonstrates its ability to recognize an approximately 51 kDa protein that corresponds to endogenous pro-CASP2. Hsp-70 was used as an equal loading control, and -/- CASP2 cells were used as a negative control.

## Specification

<b>Product Description</b>	Rat monoclonal antibody raised against partial recombinant CASP2.
<b>Immunogen</b>	Recombinant protein corresponding p19 subunit of human CASP2.
<b>Host</b>	Rat
<b>Reactivity</b>	Dog, Human, Monkey, Mouse, Rat
<b>Specificity</b>	Recognizes an epitope in the p19 subunit of human, mouse, rat, monkey and dog caspase-2. Detect s bands of ~51 KDa (procaspase-2), ~32 KDa and ~18 KDa (cleavage products) by Western blot.
<b>Form</b>	Liquid

Isotype	IgG2a
Recommend Usage	Western Blot (2 ug/mL) The optimal working dilution should be determined by the end user.
Storage Buffer	In PBS (0.02% sodium azide)
Storage Instruction	Store at 4°C. For long term storage store at -20°C. Aliquot to avoid repeated freezing and thawing.
Note	This product contains sodium azide: a POISONOUS AND HAZARDOUS SUBSTANCE which should be handled by trained staff only.

## Applications

- Western Blot (Cell lysate)

Detection of pro-CASP2 (p51) , an intermediate cleavage product of CASP2 (p32) and activated CASP2 (p19) in FDC-P1 cells (mouse IL-3 dependent promyelocytic line) during growth factor withdrawal induced apoptosis. Activation of CASP2 is inhibited in the presence of the caspase inhibitor Z-VAD-FMK.

- Western Blot

Western blot analysis of cell lysates from human and mouse cell lines with CASP2 monoclonal antibody, clone 11B4 (Cat # MAB3485). Clone 11B4 demonstrates its ability to recognize an approximately 51 kDa protein that corresponds to endogenous pro-CASP2. Hsp-70 was used as an equal loading control, and -/- CASP2 cells were used as a negative control.

- Immunoprecipitation

## Gene Info — CASP2

Entrez GeneID	<a href="#">835</a>
Gene Name	CASP2
Gene Alias	CASP-2, ICH-1L, ICH-1L/1S, ICH1, NEDD2
Gene Description	caspase 2, apoptosis-related cysteine peptidase
Omim ID	<a href="#">600639</a>
Gene Ontology	<a href="#">Hyperlink</a>

**Gene Summary**

This gene encodes a protein which is a member of the cysteine-aspartic acid protease (caspase) family. Sequential activation of caspases plays a central role in the execution-phase of cell apoptosis. Caspases exist as inactive proenzymes which undergo proteolytic processing at conserved aspartic residues to produce two subunits, large and small, that dimerize to form the active enzyme. The proteolytic cleavage of this protein is induced by a variety of apoptotic stimuli. Alternative splicing of this gene results in multiple transcript variants that encode different isoforms. [provided by RefSeq]

**Other Designations**

ICH-1 protease|NEDD2 apoptosis regulatory|caspase 2|neural precursor cell expressed, developmentally down-regulated 2

**Disease**

- [Adenocarcinoma](#)
- [Esophageal Neoplasms](#)
- [Gastrointestinal Stromal Tumors](#)
- [Genetic Predisposition to Disease](#)
- [Head and Neck Neoplasms](#)
- [Hematologic Diseases](#)
- [Hodgkin Disease](#)
- [Lymphoma](#)
- [Lymphoproliferative Disorders](#)
- [Multiple Sclerosis](#)
- [Neoplasm Recurrence](#)
- [Neoplasms](#)
- [Occupational Diseases](#)
- [Prostatic Neoplasms](#)
- [Waldenstrom Macroglobulinemia](#)
- [Werner syndrome](#)