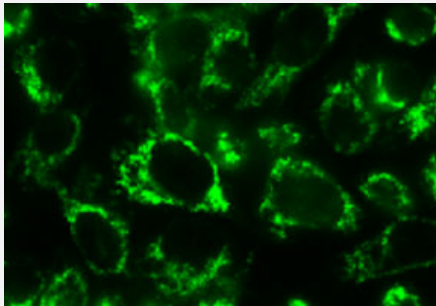


BCL2L13 monoclonal antibody, clone Rocky-2

Catalog # MAB3450 Size 100 ug

Applications



Immunofluorescence

Immunofluorescence microscopy showing the detection of endogenous BCL2L13 in HeLa cells with the antibody to BCL2L13 monoclonal antibody, clone Rocky-2 (Cat # MAB3450).

Specification

Product Description	Mouse monoclonal antibody raised against recombinant BCL2L13.
Immunogen	Recombinant tag fusion protein corresponding to human BCL2L13.
Host	Mouse
Reactivity	Human
Specificity	Recognizes the C-terminus of human Bcl-rambo (amino acids 224-459). Detects endogenous proteins by ICC, IP and WB.
Form	Liquid
Isotype	IgG1
Recommend Usage	Western Blot (1:1000) Immunoprecipitation (1:100) Immunocytochemistry (1:300) The optimal working dilution should be determined by the end user.
Storage Buffer	In PBS (0.02% sodium azide)

Storage Instruction

Store at 4°C. For long term storage store at -20°C.
Aliquot to avoid repeated freezing and thawing.

Note

This product contains sodium azide: a POISONOUS AND HAZARDOUS SUBSTANCE which should be handled by trained staff only.

Applications

- Western Blot
- Immunocytochemistry
- Immunofluorescence

Immunofluorescence microscopy showing the detection of endogenous BCL2L13 in HeLa cells with the antibody to BCL2L13 monoclonal antibody, clone Rocky-2 (Cat # MAB3450).

- Immunoprecipitation

Gene Info — BCL2L13

Entrez GeneID	23786
Gene Name	BCL2L13
Gene Alias	BCL-RAMBO, MIL 1
Gene Description	BCL2-like 13 (apoptosis facilitator)
Gene Ontology	Hyperlink
Other Designations	-

Disease

- [Genetic Predisposition to Disease](#)
- [Prostatic Neoplasms](#)
- [Tobacco Use Disorder](#)