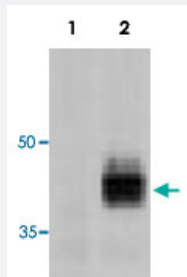


FasL monoclonal antibody, clone H11

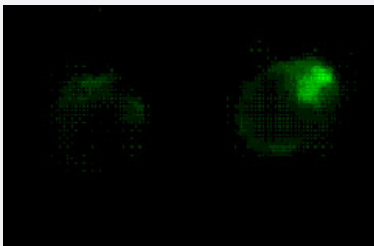
Catalog # MAB3369 Size 100 ug

Applications



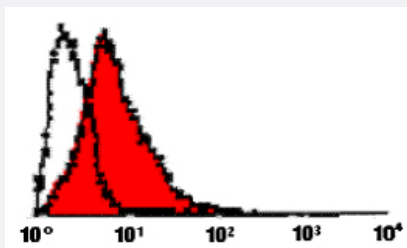
Western Blot (Transfected lysate)

Detection of FasL in 293T cells transfected with a FasL expression plasmid (Lane 2). Mock-transfected cells (Lane 1).



Immunofluorescence

Detection of FasL in 293T cells transfected with a FasL expression vector.



Flow Cytometry

Flow cytometric profile of 293T cells transiently transfected with a FasL-expression plasmid (filled profile). The open profile corresponds to mock-transfected 293T cells.

Specification

Product Description

Rat monoclonal antibody raised against synthetic peptide of FasL.

Immunogen

A synthetic peptide corresponding to amino acids 196-220 of mouse FasL.

Host	Rat
Reactivity	Mouse
Form	Liquid
Isotype	IgG2a
Recommend Usage	Western Blot (2 ug/mL) The optimal working dilution should be determined by the end user.
Storage Buffer	In PBS (0.02% sodium azide)
Storage Instruction	Store at 4°C.
Note	This product contains sodium azide: a POISONOUS AND HAZARDOUS SUBSTANCE which should be handled by trained staff only.

Applications

- Western Blot (Transfected lysate)

Detection of FasI in 293T cells transfected with a FasI expression plasmid (Lane 2). Mock-transfected cells (Lane 1).

- Immunocytochemistry

- Immunofluorescence

Detection of FasI in 293T cells transfected with a FasI expression vector.

- Flow Cytometry

Flow cytometric profile of 293T cells transiently transfected with a FasI-expression plasmid (filled profile). The open profile corresponds to mock-transfected 293T cells.

Gene Info — FasI

Entrez GeneID	14103
Gene Name	FasI
Gene Alias	APT1LG1, CD178, CD95L, Fas-L, Fas-Ligand, Faslg, Tnfsf6, gld
Gene Description	Fas ligand (TNF superfamily, member 6)
Gene Ontology	Hyperlink

Gene Summary

O

Other Designations

Fas antigen ligand|generalized lymphoproliferative disease|tumor necrosis factor (ligand) superfamily, member 6