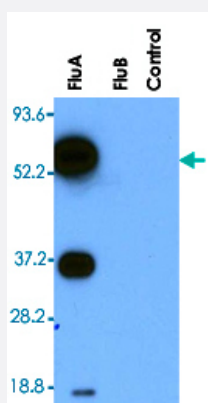


Influenza A virus nucleoprotein monoclonal antibody, clone FluA-NP 4F1

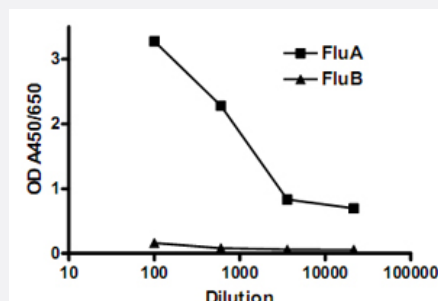
Catalog # MAB3326 Size 500 ug

Applications



Western Blot (Cell lysate)

Vero cells were infected with a strain of influenza A (H1N1) or a strain of Influenza B or non-infected cells as control. 24 hours after infection, total cell lysates were separated in 10% SDS-PAGE and blotted. The blot was probed with 0.2 ug/mL of Influenza A Nucleoprotein monoclonal antibody, clone FluA-NP 4F1 (Cat # MAB3326) and followed by HRP-conjugated goat anti-mouse IgG1.



Sandwich ELISA

Sandwich ELISA for detection of influenza A infection.

Specification

Product Description	Mouse monoclonal antibody raised against recombinant influenza A Nucleoprotein.
Immunogen	Recombinant protein corresponding to Influenza A Nucleoprotein.
Host	Mouse
Reactivity	Viruses
Specificity	Influenza A Nucleoprotein.

Form	Liquid
Isotype	IgG1
Recommend Usage	Western Blot (2-5 ug/mL) Immunostaining (2-5 ug/mL) The optimal working dilution should be determined by the end user.
Storage Buffer	In 100 mM BBS, pH 8.2
Storage Instruction	Store at 4°C.

Applications

- Western Blot (Cell lysate)

Vero cells were infected with a strain of influenza A (H1N1) or a strain of Influenza B or non-infected cells as control. 24 hours after infection, total cell lysates were separated in 10% SDS-PAGE and blotted. The blot was probed with 0.2 ug/mL of Influenza A Nucleoprotein monoclonal antibody, clone FluA-NP 4F1 (Cat # MAB3326) and followed by HRP-conjugated goat anti-mouse IgG1.

- Enzyme-linked Immunoabsorbent Assay

- Sandwich ELISA

Sandwich ELISA for detection of influenza A infection.

Publication Reference

- [The NS1 protein of H5N6 feline influenza virus inhibits feline beta interferon response by preventing NF-κB and IRF3 activation.](#)

Wang L, Fu X, Zheng Y, Zhou P, Fang B, Huang S, Zhang X, Chen J, Cao Z, Tian J, Li S.

Amino Acids 2017 Apr; 74:60.

Application: WB, Viruse, H5N6 virus-infected CRFK cells