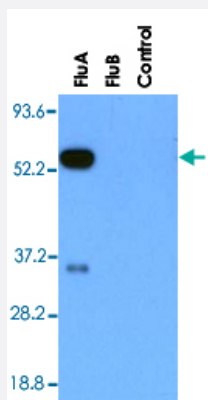


# Influenza A virus nucleoprotein monoclonal antibody, clone FluA-NP 2C9

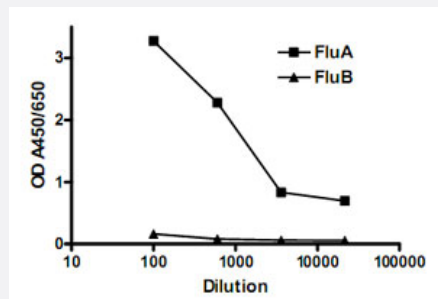
Catalog # MAB3325      Size 500 ug

## Applications



### Western Blot (Cell lysate)

Vero cells were infected with a strain of influenza A (H1N1), a strain of Influenza B, and non-infected cells as control. The blot was probed with 0.2 ug/mL of Influenza A Nucleoprotein monoclonal antibody, clone FluA-NP 2C9 (Cat # MAB3325) and followed by HRP-conjugated Goat anti-Mouse IgG1.



### Sandwich ELISA

Sandwich ELISA for detection of influenza A infection.

## Specification

<b>Product Description</b>	Mouse monoclonal antibody raised against recombinant influenza A Nucleoprotein.
<b>Immunogen</b>	Recombinant protein corresponding to Influenza A Nucleoprotein.
<b>Host</b>	Mouse
<b>Reactivity</b>	Viruses
<b>Specificity</b>	Influenza A Nucleoprotein.

<b>Form</b>	Liquid
<b>Isotype</b>	IgG1
<b>Recommend Usage</b>	Western Blot (2-5 ug/mL) Immunostaining (2-5 ug/mL) The optimal working dilution should be determined by the end user.
<b>Storage Buffer</b>	In 100 mM BBS, pH 8.2
<b>Storage Instruction</b>	Store at 4°C.

## Applications

- Western Blot (Cell lysate)

Vero cells were infected with a strain of influenza A (H1N1), a strain of Influenza B, and non-infected cells as control. The blot was probed with 0.2 ug/mL of Influenza A Nucleoprotein monoclonal antibody, clone FluA-NP 2C9 (Cat # MAB3325) and followed by HRP-conjugated Goat anti-Mouse IgG1.

- Enzyme-linked Immunoabsorbent Assay

- Sandwich ELISA

Sandwich ELISA for detection of influenza A infection.