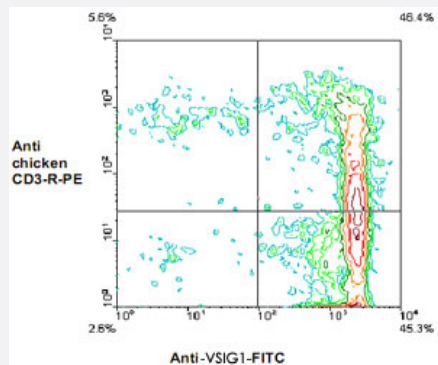


# VSIG1 monoclonal antibody, clone CT1

Catalog # MAB3280      Size 500 ug

## Applications



### Flow Cytometry

Chicken thymocytes were double stained with mouse anti-chicken CD3-R-phycoerythrin and VSIG1 monoclonal antibody, clone CT1 (Cat # MAB3280)-FITC. Analysis was performed on a FACScan™ flow cytometer (BDB, San Jose, CA) using a light scatter gate to identify small lymphocytes.

## Specification

<b>Product Description</b>	Mouse monoclonal antibody raised against native VSIG1.
<b>Immunogen</b>	Native purified VSIG1 from chicken thymocytes.
<b>Host</b>	Mouse
<b>Reactivity</b>	Chicken
<b>Specificity</b>	ChT1 antigen (Mr 63/104 KDa) on chicken thymocytes.
<b>Form</b>	Liquid
<b>Isotype</b>	IgG1
<b>Recommend Usage</b>	Flow Cytometry (1 ug/10 <sup>6</sup> cells) The optimal working dilution should be determined by the end user.
<b>Storage Buffer</b>	In 100 mM BBS, pH 8.2
<b>Storage Instruction</b>	Store at 4°C.

## Applications

- Immunoprecipitation
- Flow Cytometry

Chicken thymocytes were double stained with mouse anti-chicken CD3-R-phycoerythrin and VSIG1 monoclonal antibody, clone CT1 (Cat # MAB3280)-FITC. Analysis was performed on a FACScan™ flow cytometer (BDB, San Jose, CA) using a light scatter gate to identify small lymphocytes.

## Gene Info — VSIG1

Entrez GeneID	<a href="#">414795</a>
---------------	------------------------

Gene Name	VSIG1
-----------	-------

Gene Alias	CHT1
------------	------

Gene Description	V-set and immunoglobulin domain containing 1
------------------	--

Gene Ontology	<a href="#">Hyperlink</a>
---------------	---------------------------

Other Designations	ChT1 thymocyte antigen
--------------------	------------------------

## Publication Reference

- [ChT1, an Ig superfamily molecule required for T cell differentiation.](#)

Katevuo K, Imhof BA, Boyd R, Chidgey A, Bean A, Dunon D, Gobel TW, Vainio O.  
Journal of Immunology 1999 May; 162(10):5685.

Application: Flow Cyt, Chicken, Cells from chickens' bone marrow, spleen, thymus, PBL

- [Thymic function can be accurately monitored by the level of recent T cell emigrants in the circulation.](#)

Kong F, Chen CH, Cooper MD.  
Immunity 1998 Jan; 8(1):97.

- [Tissue distribution and ontogenic appearance of a chicken T lymphocyte differentiation marker.](#)

Houssaint E, Diez E, Jotereau FV.  
European Journal of Immunology 1985 Mar; 15(3):305.