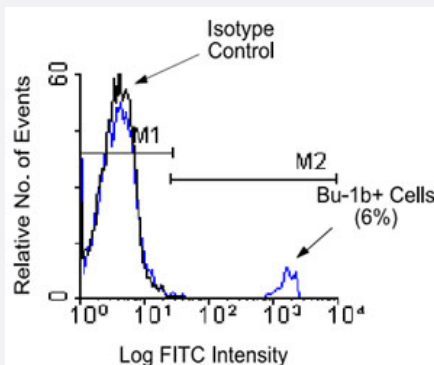


Bu-1 monoclonal antibody, clone 5-11G2

Catalog # MAB3279 Size 500 ug

Applications



Flow Cytometry

Chicken peripheral blood mononuclear cells were first incubated with Chicken Bu-1 monoclonal antibody, clone AV20 (Cat # MAB3279) and then counter-stained with goat anti-mouse IgG-FITC. Small lymphocytes were gated using light scatter criteria and analyzed on a FACScan™ flow cytometer (BDB, San Jose, CA).

Specification

Product Description	Mouse monoclonal antibody raised against Bu-1.
Immunogen	Bursal cells from 2- to 5-week-old CHA (Bu-1b) strain chickens.
Host	Mouse
Reactivity	Chicken
Specificity	Chicken Bu-1b alloantigen, Mr 70 KDa.
Form	Liquid
Isotype	IgG1, kappa
Recommend Usage	Flow Cytometry (1 ug/10 ⁶ cells) The optimal working dilution should be determined by the end user.
Storage Buffer	In 100 mM BBS, pH 8.2 (0.09% sodium azide)
Storage Instruction	Store at 4°C.

Applications

- Immunohistochemistry (Frozen sections)
- Immunoprecipitation
- Flow Cytometry

Chicken peripheral blood mononuclear cells were first incubated with Chicken Bu-1 monoclonal antibody, clone AV20 (Cat # MAB3279) and then counter-stained with goat anti-mouse IgG-FITC. Small lymphocytes were gated using light scatter criteria and analyzed on a FACScan™ flow cytometer (BDB, San Jose, CA).

Publication Reference

- [Identification of chicken Bu-1 alloantigens using the monoclonal antibody AV20.](#)

Rothwell CJ, Vervelde L, Davison TF.

Veterinary Immunology and Immunopathology 1996 Dec; 55(1-3):225.

Application: Flow Cyt, Chicken, Chickens lymphocytes