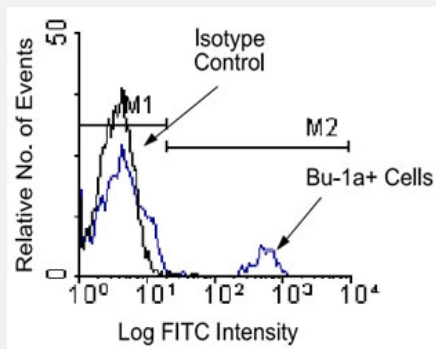


Bu-1a monoclonal antibody, clone 21-1A4

Catalog # MAB3275 Size 500 ug

Applications



Flow Cytometry

Chicken peripheral blood mononuclear cells were first incubated with purified Chicken Bu-1a monoclonal antibody, clone 21-1A4 (Cat # MAB3275) and then counter-stained with goat anti-mouse IgG-FITC. Small lymphocytes were gated using light scatter criteria and analyzed on a FACScan™ flow cytometer (BDB, San Jose, CA).

Specification

Product Description	Mouse monoclonal antibody raised against Bu-1a.
Immunogen	Bursal cells from one-day-old H.B15 (Bu-1 a/b) strain chickens.
Host	Mouse
Reactivity	Chicken
Specificity	Chicken Bu-1a alloantigen, Mr 70 KDa.
Form	Liquid
Isotype	IgG1
Recommend Usage	Flow Cytometry (1 ug/10 ⁶ cells) The optimal working dilution should be determined by the end user.
Storage Buffer	In 100 mM BBS, pH 8.2
Storage Instruction	Store at 4°C.

Applications

- Immunohistochemistry (Frozen sections)
- Immunoprecipitation
- Flow Cytometry

Chicken peripheral blood mononuclear cells were first incubated with purified Chicken Bu-1a monoclonal antibody, clone 21-1A4 (Cat # MAB3275) and then counter-stained with goat anti-mouse IgG-FITC. Small lymphocytes were gated using light scatter criteria and analyzed on a FACScan™ flow cytometer (BDB, San Jose, CA).

Publication Reference

- [Monoclonal antibodies against chicken Bu-1a and Bu-1b alloantigens.](#)

Veromaa T, Vainio O, Eerola E, Toivanen P.

Hybridoma 1988 Feb; 7(1):41.

Application: Flow Cyt, Func, Chicken, Bursa cells, peripheral blood leukocytes

- [Ontogeny and tissue distribution of the chicken Bu-1a antigen.](#)

Houssaint E, Diez E, Pink JR.

Immunology 1987 Nov; 62(3):463.