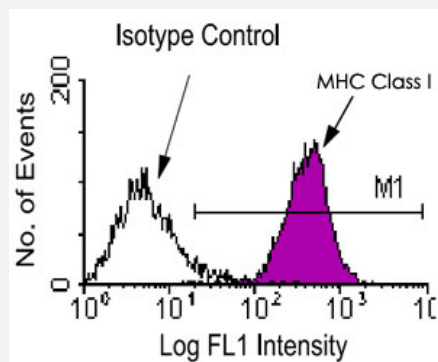


# H2-D2 monoclonal antibody, clone 28-14-8

Catalog # MAB3258      Size 500 ug

## Applications



### Flow Cytometry

Splenocytes from DBA1/J mice were stained with H2-D2 monoclonal antibody, clone 28-14-8 (Cat # MAB3258)-FITC. Small lymphocytes were then gated and analyzed on a FACScan™ flow cytometer (BDIS, San Jose, CA).

## Specification

**Product Description** Mouse monoclonal antibody raised against H2-D2.

**Immunogen** Native from C3H.SW mouse skin graft and splenocytes.

**Host** Mouse

**Reactivity** Mouse

**Specificity** An epitope in the alpha3 domain of H-2Db.

**Form** Liquid

**Isotype** IgG2a

**Recommend Usage** Flow Cytometry (1 ug/10<sup>6</sup> cells)  
The optimal working dilution should be determined by the end user.

**Storage Buffer** In 100 mM BBS, pH 8.2

**Storage Instruction** Store at 4°C.

## Applications

- Immunohistochemistry (Frozen sections)
- Flow Cytometry

Splenocytes from DBA1/J mice were stained with H2-D2 monoclonal antibody, clone 28-14-8 (Cat # MAB3258)-FITC. Small lymphocytes were then gated and analyzed on a FACScan™ flow cytometer (BDIS, San Jose, CA).

## Publication Reference

- [Cloning and functional characteristics of murine large granular lymphocyte-1: a member of the Ly-49 gene family \(Ly-49G2\).](#)

Mason LH, Ortaldo JR, Young HA, Kumar V, Bennett M, Anderson SK.

The Journal of Experimental Medicine 1995 Aug; 182(2):293.

Application: Flow Cyt, Mouse, Mouse natural killer cells

- [Fibroblasts as efficient antigen-presenting cells in lymphoid organs.](#)

Kundig TM, Bachmann MF, DiPaolo C, Simard JJ, Battegay M, Lothar H, Gessner A, Kuhlcke K, Ohashi PS, Hengartner H, et al..

Science 1995 Jun; 268(5215):1343.

Application: Func, Mouse, L929 cells

- [Beta 2-microglobulin deficient mice lack CD4-8+ cytolytic T cells.](#)

Zijlstra M, Bix M, Simister NE, Loring JM, Raulet DH, Jaenisch R.

Nature 1990 Apr; 344(6268):742.

Application: Flow Cyt, Mouse, Mouse embryonic fibroblasts