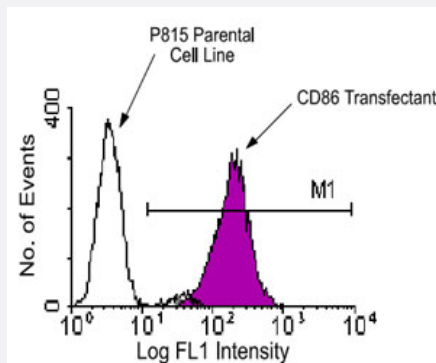


Cd86 monoclonal antibody, clone GL1

Catalog # MAB3238 Size 500 ug

Applications



Flow Cytometry

BALB/c spleen cells were activated by incubation for 72 hours with LPS. The cells were then harvested and stained with Cd86 monoclonal antibody, clone GL1 (Cat # MAB3238)-FITC. A wide gate was set to include small, medium and large cells, following which the cells were analyzed on a FACScan™ flow cytometer (BDIS, San Jose, CA).

Specification

Product Description	Rat monoclonal antibody raised against Cd86.
Immunogen	Native Cd86 from LPS-activated mouse B cells.
Host	Rat
Reactivity	Mouse
Specificity	Mouse CD86, the B7-2 co-stimulatory molecule and a ligand for CD28 and CD152/CTLA-4.
Form	Liquid
Isotype	IgG2a
Recommend Usage	The optimal working dilution should be determined by the end user.
Storage Buffer	In 100 mM BBS, pH 8.2
Storage Instruction	Store at 4°C.

Applications

- Immunohistochemistry (Frozen sections)
- Immunoprecipitation
- Flow Cytometry

BALB/c spleen cells were activated by incubation for 72 hours with LPS. The cells were then harvested and stained with Cd86 monoclonal antibody, clone GL1 (Cat # MAB3238)-FITC. A wide gate was set to include small, medium and large cells, following which the cells were analyzed on a FACScan™ flow cytometer (BDIS, San Jose, CA).

Gene Info — Cd86

Entrez GeneID	12524
Gene Name	Cd86
Gene Alias	B7, B7-2, B7.2, B70, CLS1, Cd28l2, ETC-1, Ly-58, Ly58, MB7, MB7-2, TS/A-2
Gene Description	CD86 antigen
Gene Ontology	Hyperlink
Other Designations	OTTMUSP00000015940 T-lymphocyte activation antigen CD86 activation B7-2 antigen early T cell costimulatory molecule-1

Publication Reference

- [Cellular interaction in germinal centers. Roles of CD40 ligand and B7-2 in established germinal centers.](#)

Han S, Hathcock K, Zheng B, Kepler TB, Hodes R, Kelsoe G.

Journal of Immunology 1995 Jul; 155(2):556.

Application: Func, IHC-Fr, Mouse, Mouse spleen

- [Distinct roles for the costimulatory ligands B7-1 and B7-2 in T helper cell differentiation?](#)

Thompson CB.

Cell 1995 Jun; 81(7):979.

Application: Flow Cyt, Func, WB-Ce, WB-Tr, Human, Mouse, B cells, Dendritic cells, Mammalian cells, Monocytes, T cells

- [Comparative analysis of B7-1 and B7-2 costimulatory ligands: expression and function.](#)

Hathcock KS, Laszlo G, Pucillo C, Linsley P, Hodes RJ.

The Journal of Experimental Medicine 1994 Aug; 180(2):631.

Application: Flow Cyt, Func, Mouse, Mouse B cells, CHO cells, Macrophages, T cells