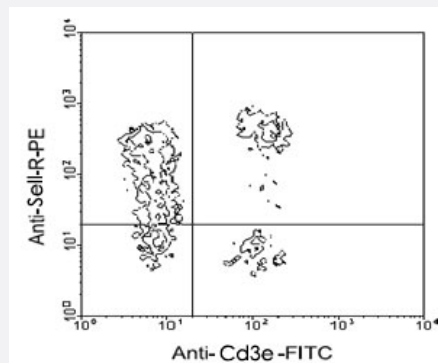


Sell monoclonal antibody, clone MEL-14

Catalog # MAB3235 Size 500 ug

Applications



Flow Cytometry

BALB/c splenocytes were double-stained with Sell monoclonal antibody, clone MEL-14 (Cat # MAB3235)-R-phycoerythrin and rat anti-mouse Cd3e-FITC. Lymphocytes were gated and analyzed on a FACScan™ flow cytometer (BDIS, San Jose, CA).

Specification

Product Description	Rat monoclonal antibody raised against Sell.
Immunogen	Native Sell from C3H/eb cloned mouse B lymphoma 38C-13.
Host	Rat
Reactivity	Mouse
Specificity	CD62L/L-selectin, Mr 90 KDa.
Form	Liquid
Isotype	IgG2a
Recommend Usage	The optimal working dilution should be determined by the end user.
Storage Buffer	In 100 mM BBS, pH 8.2
Storage Instruction	Store at 4°C.

Applications

- Immunohistochemistry (Frozen sections)
- Immunoprecipitation
- Flow Cytometry

BALB/c splenocytes were double-stained with Sell monoclonal antibody, clone MEL-14 (Cat # MAB3235)-R-phycoerythrin and rat anti-mouse Cd3e-FITC. Lymphocytes were gated and analyzed on a FACScan™ flow cytometer (BDIS, San Jose, CA).

Gene Info — Sell

Entrez GeneID	20343
Gene Name	Sell
Gene Alias	AI528707, CD62L, L-selectin, LECAM-1, Lnh, Ly-22, Ly-m22, Lyam-1, Lyam1
Gene Description	selectin, lymphocyte
Gene Ontology	Hyperlink
Gene Summary	O
Other Designations	-

Publication Reference

- [Sequential contribution of L- and P-selectin to leukocyte rolling in vivo.](#)
Ley K, Bullard DC, Arbones ML, Bosse R, Vestweber D, Tedder TF, Beaudet AL.
The Journal of Experimental Medicine 1995 Feb; 181(2):669.
Application: IA, Mouse, Mouse leukocytes
- [Monoclonal antibody blockade of L-selectin inhibits mononuclear leukocyte recruitment to inflammatory sites in vivo.](#)
Pizcueta P, Luscinskas FW.
The American Journal of Pathology 1994 Aug; 145(2):461.
Application: Flow Cyt, Mouse, Leukocytes