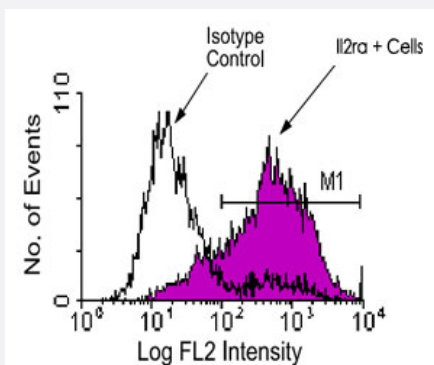


Il2ra monoclonal antibody, clone 7D4

Catalog # MAB3228 Size 500 ug

Applications



Flow Cytometry

Cells from BALB/c spleen were activated by PMA (10 ng/mL) and ionomycin (400 ng/mL) for 48 hours, then stained with Il2ra monoclonal antibody, clone 7D4 (Cat # MAB3228)-FITC and analyzed on a FACScan™ flow cytometer (BDIS, San Jose, CA).

Specification

Product Description	Rat monoclonal antibody raised against Il2ra.
Immunogen	Native Il2ra from mouse helper T-cell clone HT-2.
Host	Rat
Reactivity	Mouse
Specificity	Low affinity alpha chain IL-2 receptor (IL-2Ralpha), Mr 55 KDa.
Form	Liquid
Isotype	IgM
Recommend Usage	The optimal working dilution should be determined by the end user.
Storage Buffer	In 100 mM BBS, pH 8.2
Storage Instruction	Store at 4°C.

Applications

- Immunoprecipitation

- Flow Cytometry

Cells from BALB/c spleen were activated by PMA (10 ng/mL) and ionomycin (400 ng/mL) for 48 hours, then stained with Il2ra monoclonal antibody, clone 7D4 (Cat # MAB3228)-FITC and analyzed on a FACScan™ flow cytometer (BDIS, San Jose, CA).

Gene Info — Il2ra

Entrez GeneID	16184
---------------	-----------------------

Gene Name	Il2ra
-----------	-------

Gene Alias	CD25, Il2r, Ly-43, MGC130561
------------	------------------------------

Gene Description	interleukin 2 receptor, alpha chain
------------------	-------------------------------------

Gene Ontology	Hyperlink
---------------	---------------------------

Gene Summary	O
--------------	---

Other Designations	IL-2R alpha chain OTTMUSP00000012002 p55 chain
--------------------	--

Publication Reference

- [IL-2 receptor alpha chain \(CD25, TAC\) expression defines a crucial stage in pre-B cell development.](#)

Rolink A, Grawunder U, Winkler TH, Karasuyama H, Melchers F.

International Immunology 1994 Aug; 6(8):1257.

- [IL-2 receptor alpha chain expression during early B lymphocyte differentiation.](#)

Chen J, Ma A, Young F, Alt FW.

International Immunology 1994 Aug; 6(8):1265.

- [Monoclonal antibodies identify three epitope clusters on the mouse p55 subunit of the interleukin 2 receptor: relationship to the interleukin 2-binding site.](#)

Moreau JL, Nabholz M, Diamantstein T, Malek T, Shevach E, Theze J.

European Journal of Immunology 1987 Jul; 17(7):929.

Application: Func, IA, Mouse, C30-1 cells