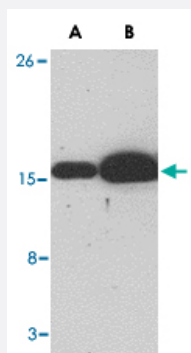


# BCL2L11 monoclonal antibody, clone 1C2C8

Catalog # MAB2750

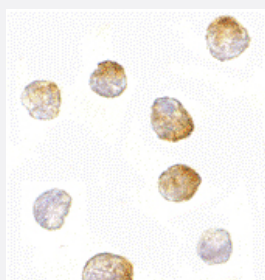
Size 100 ug

## Applications



### Western Blot (Recombinant protein)

Western blot analysis of (A) 5 and (B) 25 ng of BCL2L11 recombinant protein with BCL2L11 monoclonal antibody, clone 1C2C8 (Cat # MAB2750) at 1 ug/mL .



### Immunocytochemistry

Immunocytochemistry of BCL2L11 in K-562 cells with BCL2L11 monoclonal antibody, clone 1C2C8 (Cat # MAB2750) at 10 ug/mL .

## Specification

### Product Description

Mouse monoclonal antibody raised against recombinant BCL2L11.

### Immunogen

Recombinant protein corresponding to amino acids 176-280 of human BCL2L11.

### Host

Mouse

### Reactivity

Human, Mouse

### Form

Liquid

### Isotype

IgG

<b>Recommend Usage</b>	Western Blot (0.5-1 ug/mL) The optimal working dilution should be determined by the end user.
<b>Storage Buffer</b>	In PBS (0.02% sodium azide)
<b>Storage Instruction</b>	Store at 4°C for three months. For long term storage store at -20°C. Aliquot to avoid repeated freezing and thawing.
<b>Note</b>	This product contains sodium azide: a POISONOUS AND HAZARDOUS SUBSTANCE which should be handled by trained staff only.

## Applications

- Western Blot (Recombinant protein)

Western blot analysis of (A) 5 and (B) 25 ng of BCL2L11 recombinant protein with BCL2L11 monoclonal antibody, clone 1C2C8 (Cat # MAB2750) at 1 ug/mL .

- Immunocytochemistry

Immunocytochemistry of BCL2L11 in K-562 cells with BCL2L11 monoclonal antibody, clone 1C2C8 (Cat # MAB2750) at 10 ug/mL .

## Gene Info — BCL2L11

<b>Entrez GeneID</b>	<a href="#">10018</a>
<b>Protein Accession#</b>	<a href="#">n/a</a>
<b>Gene Name</b>	BCL2L11
<b>Gene Alias</b>	BAM, BIM, BIM-alpha6, BIM-beta6, BIM-beta7, BOD, BimEL, BimL
<b>Gene Description</b>	BCL2-like 11 (apoptosis facilitator)
<b>Omim ID</b>	<a href="#">603827</a>
<b>Gene Ontology</b>	<a href="#">Hyperlink</a>

## Gene Summary

The protein encoded by this gene belongs to the BCL-2 protein family. BCL-2 family members form hetero- or homodimers and act as anti- or pro-apoptotic regulators that are involved in a wide variety of cellular activities. The protein encoded by this gene contains a Bcl-2 homology domain 3 (BH3). It has been shown to interact with other members of the BCL-2 protein family, including BCL2, BCL2L1/BCL-X(L), and MCL1, and to act as an apoptotic activator. The expression of this gene can be induced by nerve growth factor (NGF), as well as by the forkhead transcription factor FOXO1, which suggests a role of this gene in neuronal and lymphocyte apoptosis. Transgenic studies of the mouse counterpart suggested that this gene functions as an essential initiator of apoptosis in thymocyte-negative selection. Several alternatively spliced transcript variants of this gene have been identified. [provided by RefSeq]

## Other Designations

BCL2-like 11|bcl-2 interacting mediator of cell death|bcl-2 interacting protein Bim|bcl-2-related ovarian death agonist

## Publication Reference

- [BOD \(Bcl-2-related ovarian death gene\) is an ovarian BH3 domain-containing proapoptotic Bcl-2 protein capable of dimerization with diverse antiapoptotic Bcl-2 members.](#)

Hsu SY, Lin P, Hsueh AJ.

Molecular Endocrinology (Baltimore, Md.) 1998 Sep; 12(9):1432.

- [Bim: a novel member of the Bcl-2 family that promotes apoptosis.](#)

O'Connor L, Strasser A, O'Reilly LA, Hausmann G, Adams JM, Cory S, Huang DC.

The EMBO Journal 1998 Jan; 17(2):384.

## Disease

- [Adenocarcinoma](#)
- [Disease Progression](#)
- [Genetic Predisposition to Disease](#)
- [Head and Neck Neoplasms](#)
- [Hematologic Diseases](#)
- [Hodgkin Disease](#)
- [Leukemia](#)
- [Lymphatic Metastasis](#)
- [Lymphoma](#)

- [Lymphoproliferative Disorders](#)
- [Neoplasm Recurrence](#)
- [Neoplasms](#)
- [Neovascularization](#)
- [Occupational Diseases](#)
- [Stomach Neoplasms](#)
- [Waldenstrom Macroglobulinemia](#)
- [Werner syndrome](#)