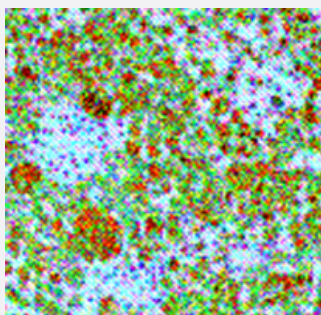


S100A1 monoclonal antibody, clone SPM354

Catalog # MAB2546

Size 100 ug

Applications



Immunohistochemistry (Formalin/PFA-fixed paraffin-embedded sections)

Immunohistochemical staining of human melanoma with S100A1 monoclonal antibody, clone SPM354 (Cat # MAB2546) at 1 : 50 for 10 min at RT. Staining of formalin-fixed tissue requires boiling tissue sections in 10 mM Citrate Buffer, pH 6.0 for 10 min followed by cooling at RT for 20 min.

Specification

Product Description	Mouse monoclonal antibody raised against native S100A1.
Immunogen	Native purified bovine brain S100A1.
Host	Mouse
Theoretical MW (kDa)	22, 11
Reactivity	Bovine, Human, Mouse, Rat
Specificity	This antibody recognizes 22 KDa for non-reduced S100A1 and 11 KDa for reduced S100A1.
Form	Liquid
Isotype	IgG2a, kappa
Quality Control Testing	Antibody Reactive Against Native Purified Protein.
Recommend Usage	Western Blot (0.1-1 ug/mL) ELISA (0.01-0.1 ug/mL) Immunoprecipitation (2-5 ug/mL) Immunohistochemistry (1:50-1:100) The optimal working dilution should be determined by the end user.

Storage Buffer

In PBS, pH 7.2 (BSA, 10% Proclin300)

Storage Instruction

Store at 4°C. For long term storage store at -20°C or -80°C.

Aliquot to avoid repeated freezing and thawing. Upon initial thawing, apportion into working aliquots and store at -80°C for up to six months.

Applications

- Western Blot
- Immunohistochemistry (Formalin/PFA-fixed paraffin-embedded sections)

Immunohistochemical staining of human melanoma with S100A1 monoclonal antibody, clone SPM354 (Cat # MAB2546) at 1 : 50 for 10 min at RT. Staining of formalin-fixed tissue requires boiling tissue sections in 10 mM Citrate Buffer, pH 6.0 for 10 min followed by cooling at RT for 20 min.

- Immunoprecipitation
- Enzyme-linked Immunoabsorbent Assay

Gene Info — S100A1

Entrez GeneID[528735](#)**Gene Name**

S100A1

Gene Alias

MGC159706

Gene Description

S100 calcium binding protein A1

Gene Ontology[Hyperlink](#)**Other Designations**

-