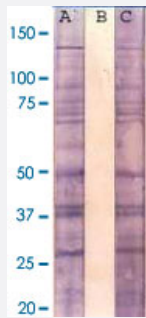


Phosphoserine monoclonal antibody, clone 2A4

Catalog # MAB2545 Size 100 ug

Applications



Western Blot (Cell lysate)

The cell lysate derived from EGF-stimulated A-431 was resolved onto 12% SDS-PAGE and immunoblotted by Phosphoserine monoclonal antibody, clone 2A4 (Cat # MAB2545) at 1 : 500 (Lane A) ; or pre-incubated by Phosphoserine (lane B) or pre-incubated by phosphotyrosine (lane C). A panel of phosphorylated proteins was observed.

Specification

Product Description	Mouse monoclonal antibody raised against Phosphoserine.
Immunogen	A chemically linked phosphoserine.
Host	Mouse
Reactivity	Human, Mouse, Rat
Specificity	This antibody recognizes phosphoserine only. It does not cross react with phosphotyrosine or phosphothreonine.
Form	Liquid
Isotype	IgG
Recommend Usage	Western Blot (0.1-1 ug/mL) ELISA (0.01-0.1 ug/mL) Immunoprecipitation (2-5 ug/mL) The optimal working dilution should be determined by the end user.
Storage Buffer	In TBS, pH 7.2 (antibody stabilizer).

Storage Instruction

Store at 4°C. For long term storage store at -20°C or -80°C.

Aliquot to avoid repeated freezing and thawing. Upon initial thawing, apportion into working aliquots and store at -80°C for up to six months.

Applications

- Western Blot (Cell lysate)

The cell lysate derived from EGF-stimulated A-431 was resolved onto 12% SDS-PAGE and immunoblotted by Phosphoserine monoclonal antibody, clone 2A4 (Cat # MAB2545) at 1 : 500 (Lane A) ; or pre-incubated by Phosphoserine (lane B) or pre-incubated by phosphotyrosine (lane C). A panel of phosphorylated proteins was observed.

- Immunoprecipitation

- Enzyme-linked Immunoabsorbent Assay

Publication Reference

- [Autoantibodies in primary Sjogren's syndrome patients induce internalization of muscarinic type 3 receptors.](#)

Jin M, Hwang SM, Davies AJ, Shin Y, Bae JS, Lee JH, Lee EB, Song YW, Park K.

Biochimica et Biophysica Acta 2012 Feb; 1822(2):161.

Application: IP, Human, hSMG cells