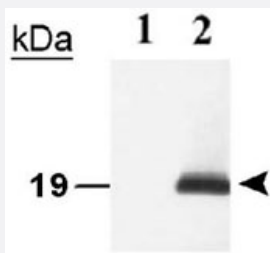


Cdkn2a monoclonal antibody, clone 5-C3-1

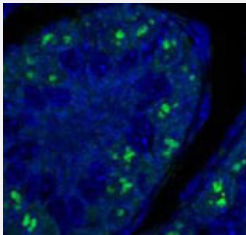
Catalog # MAB2417 Size 100 uL

Applications



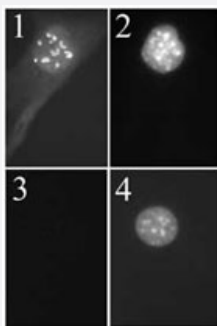
Western Blot (Cell lysate)

Western blot analysis of endogenous Cdkn2a using Cdkn2a monoclonal antibody, clone 5-C3-1 (Cat # MAB2417). Total cell lysates (25 ug) from NIH/3T3 cells, which have deleted the Cdkn2a gene (lane 1) and from wild type MEF.



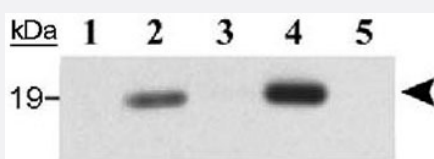
Immunohistochemistry

Immunohistochemical staining of Cdkn2a on sections from a wild type mouse testis taken at P11 were probed with Cdkn2a monoclonal antibody, clone 5-C3-1 (Cat # MAB2417) (green). Sections were stained with DAPI to reveal the position of cell nuclei (blue).



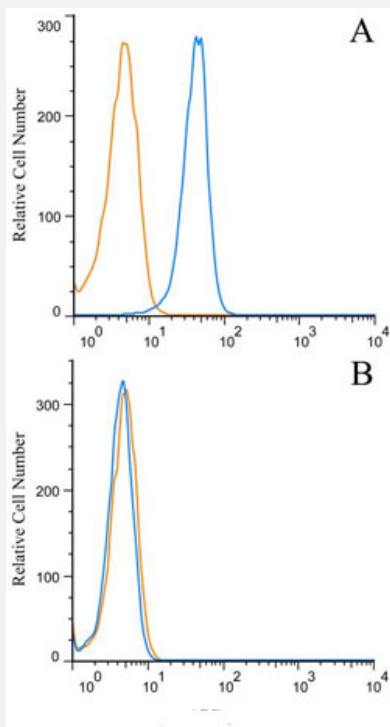
Immunofluorescence

Immunofluorescent detection of Cdkn2a using Cdkn2a monoclonal antibody, clone 5-C3-1 (Cat # MAB2417). Wild type MEF at passage 5 (panels 1, 2) and NIH/3T3 cells, which have deleted the Cdkn2a gene (panels 3, 4).



Immunoprecipitation

Immunoprecipitation of Cdkn2a using Cdkn2a monoclonal antibody, clone 5-C3-1 (Cat # MAB2417). Total cell lysates (250 ug) from NIH/3T3 cells which have deleted the Cdkn2a gene (lane 5) and from NIH/3T3 cells expressing an HA-tagged version of Cdkn2a.



Flow Cytometry

Flow cytometric analysis of (A) intracellular stain was performed on HEK293 cells with Cdkn2a monoclonal antibody and a matched isotype control (orange), (B) intracellular stain was also performed on THP-1 (known homozygous deletion of gene, PMID: 19635138) cells to ensure antibody specificity.

Specification

Product Description	Rat monoclonal antibody raised against synthetic peptide of Cdkn2a.
Immunogen	A synthetic peptide corresponding to amino acids 54-75 of mouse Cdkn2a.
Host	Rat
Reactivity	Mouse
Specificity	This antibody is specific to residues 62-75 of murine p19ARF.
Form	Liquid
Isotype	IgG2b
Quality Control Testing	Antibody Reactive Against Synthetic Peptide.
Recommend Usage	Flow Cytometry (1 ug/mL) Immunoprecipitation (1:10-500) Immunocytochemistry (1:500-1000) Immunofluorescence (1:500-1000) Immunohistochemistry (Frozen sections) (5 ug/mL) Immunohistochemistry (Formalin/PFA-fixed paraffin-embedded sections) (5 ug/mL) Western Blot (1:500-1:1000) The optimal working dilution should be determined by the end user.

Storage Buffer	In Tris-glycine, 150 mM NaCl (0.05% sodium azide)
Storage Instruction	Store at 4°C for short term. For long term storage store at -20°C. Aliquot to avoid repeated freezing and thawing.
Note	This product contains sodium azide: a POISONOUS AND HAZARDOUS SUBSTANCE which should be handled by trained staff only.

Applications

- Western Blot (Cell lysate)

Western blot analysis of endogenous Cdkn2a using Cdkn2a monoclonal antibody, clone 5-C3-1 (Cat # MAB2417). Total cell lysates (25 ug) from NIH/3T3 cells, which have deleted the Cdkn2a gene (lane 1) and from wild type MEF.

- Immunohistochemistry (Frozen sections)

- Immunohistochemistry

Immunohistochemical staining of Cdkn2a on sections from a wild type mouse testis taken at P11 were probed with Cdkn2a monoclonal antibody, clone 5-C3-1 (Cat # MAB2417) (green). Sections were stained with DAPI to reveal the position of cell nuclei (blue).

- Immunofluorescence

Immunofluorescent detection of Cdkn2a using Cdkn2a monoclonal antibody, clone 5-C3-1 (Cat # MAB2417). Wild type MEF at passage 5 (panels 1, 2) and NIH/3T3 cells, which have deleted the Cdkn2a gene (panels 3, 4).

- Immunoprecipitation

Immunoprecipitation of Cdkn2a using Cdkn2a monoclonal antibody, clone 5-C3-1 (Cat # MAB2417). Total cell lysates (250 ug) from NIH/3T3 cells which have deleted the Cdkn2a gene (lane 5) and from NIH/3T3 cells expressing an HA-tagged version of Cdkn2a.

- Flow Cytometry

Flow cytometric analysis of (A) intracellular stain was performed on HEK293 cells with Cdkn2a monoclonal antibody and a matched isotype control (orange), (B) intracellular stain was also performed on THP-1 (known homozygous deletion of gene, PMID: 19635138) cells to ensure antibody specificity.

Gene Info — Cdkn2a

Entrez GeneID [12578](#)

Protein Accession# [Q64364](#)

Gene Name Cdkn2a

Gene Alias	ARF-INK4a, Arf, INK4a-ARF, Ink4a/Arf, MTS1, Pctr1, p16, p16(INK4a), p16INK4a, p19<ARF>, p19ARF
Gene Description	cyclin-dependent kinase inhibitor 2A
Gene Ontology	Hyperlink
Gene Summary	inhibits CDK4) cyclin-dependent kinase inhibitor protein mitochondrial smARF
Other Designations	OTTMUSP00000008143 cyclin-dependent kinase inhibitor 2A (p16, inhibits CDK4) cyclin-dependent kinase inhibitor protein mitochondrial smARF

Publication Reference

- [Increased DNA damage sensitivity and apoptosis in cells lacking the Snf5/Ini1 subunit of the SWI/SNF chromatin remodeling complex.](#)

Klochender-Yeivin A, Picarsky E, Yaniv M.

Molecular and Cellular Biology 2006 Apr; 26(7):2661.

Application: WB-Ce, Mouse, MEFs

- [Monoclonal antibodies to the mouse p19\(Arf\) tumor suppressor protein.](#)

Bertwistle D, Zindy F, Sherr CJ, Roussel MF.

Hybridoma and Hybridomics 2004 Oct; 23(5):293.

Application: IF, IP, IHC, WB, Mouse, NIH/3T3 cells