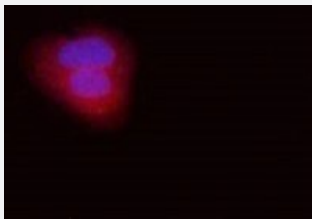


# PROM1 monoclonal antibody (APC)

Catalog # MAB23681-M01

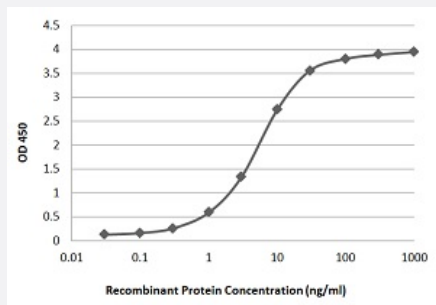
Size 50 ug

## Applications



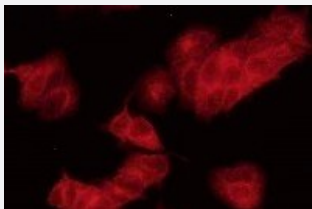
### Immunofluorescence

Immunofluorescence staining performed on CTCs from the patient recovered by SuperSlide™. PROM1 was detected via red signal (APC).



### Sandwich ELISA

Sandwich ELISA performed with PROM1 recombinant protein and PROM1 monoclonal antibody (APC).



### Immunofluorescence

Immunofluorescence staining performed on MCF-7 cells using PROM1 monoclonal antibody (APC) (10 ug/mL).

## Specification

### Product Description

APC conjugated mouse PROM1 monoclonal antibody.

### Amenable Platform

[LiquidCell™ negative enrichment cell isolation](#)

Immunogen	Human recombinant PROM1
Host	Mouse
Form	Liquid
Conjugation	APC
Concentration	0.5 mg/mL
Isotype	IgG1, kappa
Available Test	16 assays
Quality Control Testing	Results Sandwich ELISA Sandwich ELISA performed with PROM1 recombinant protein and PROM1 monoclonal antibody (APC).  Immunofluorescence Immunofluorescence staining performed on MCF-7 cells using PROM1 monoclonal antibody (APC) (10 ug/mL).
Recommend Usage	Immunofluorescence (10 ug/mL) LiquidCell™ SuperSlide™ (6 uL per slide)
Regulatory Status	Research Use Only
Storage Buffer	In 1x PBS, pH 7.4
Storage Instruction	Store at 2-8°C. Do not freeze.
Instrument Compatibility	Ventana™ BenchMark Stainer

## Applications

- Immunofluorescence

Immunofluorescence staining performed on CTCs from the patient recovered by SuperSlide™. PROM1 was detected via red signal (APC).

## Gene Info — PROM1

Entrez GeneID	<a href="#">8842</a>
Gene Name	PROM1
Gene Alias	AC133, CD133, MSTP061, PROML1, RP41

Gene Description	prominin 1
Omim ID	<a href="#">604365</a>
Gene Ontology	<a href="#">Hyperlink</a>
Gene Summary	<p>This gene encodes a pentaspan transmembrane glycoprotein. The protein localizes to membrane protrusions and is often expressed on adult stem cells, where it is thought to function in maintaining stem cell properties by suppressing differentiation. Mutations in this gene have been shown to result in retinitis pigmentosa and Stargardt disease. Expression of this gene is also associated with several types of cancer. This gene is expressed from at least five alternative promoters that are expressed in a tissue-dependent manner. Multiple transcript variants encoding different isoforms have been found for this gene. [provided by RefSeq]</p>
Other Designations	hProminin hematopoietic stem cell antigen prominin-like 1

## Disease

- [Carcinoma](#)
- [Genetic Predisposition to Disease](#)
- [Head and Neck Neoplasms](#)
- [Neoplasms](#)
- [Recurrence](#)
- [Tobacco Use Disorder](#)