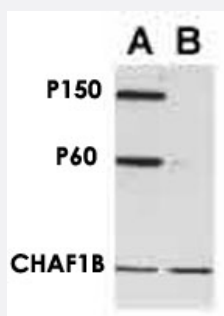


# CHAF1B monoclonal antibody, clone SS 53

Catalog # MAB2355      Size 100 uL

## Applications



### Western Blot (Cell lysate)

Western Blot analysis of :

A. RKO cells with p150 antibody and CHAF1B monoclonal antibody, clone SS 53 (Cat #MAB2355).

B. p150 RNAi knockdown.

## Specification

<b>Product Description</b>	Mouse monoclonal antibody raised against recombinant CHAF1B.
<b>Immunogen</b>	Recombinant protein corresponding to human CHAF1B.
<b>Host</b>	Mouse
<b>Reactivity</b>	Human
<b>Specificity</b>	Specific for CAF-1p60.
<b>Form</b>	Liquid
<b>Isotype</b>	IgG1
<b>Recommend Usage</b>	The optimal working dilution should be determined by the end user.
<b>Storage Buffer</b>	In buffer containing 0.09% sodium azide
<b>Storage Instruction</b>	Store at -20°C or -80°C. Aliquot to avoid repeated freezing and thawing.
<b>Note</b>	This product contains sodium azide: a POISONOUS AND HAZARDOUS SUBSTANCE which should be handled by trained staff only.

## Applications

- Western Blot (Cell lysate)

Western Blot analysis of :

A. RKO cells with p150 antibody and CHAF1B monoclonal antibody, clone SS 53 (Cat #MAB2355).

B. p150 RNAi knockdown.

- Immunoprecipitation

## Gene Info — CHAF1B

Entrez GeneID [8208](#)

Protein Accession# [Q13112](#)

Gene Name CHAF1B

Gene Alias CAF-1, CAF-IP60, CAF1, CAF1A, CAF1P60, MPHOSPH7, MPP7

Gene Description chromatin assembly factor 1, subunit B (p60)

Omim ID [601245](#)

Gene Ontology [Hyperlink](#)

**Gene Summary** Chromatin assembly factor I (CAF-I) is required for the assembly of histone octamers onto newly-replicated DNA. CAF-I is composed of three protein subunits, p50, p60, and p150. The protein encoded by this gene corresponds to the p60 subunit and is required for chromatin assembly after replication. The encoded protein is differentially phosphorylated in a cell cycle-dependent manner. In addition, it is normally found in the nucleus except during mitosis, when it is released into the cytoplasm. This protein is a member of the WD-repeat HIR1 family and may also be involved in DNA repair. [provided by RefSeq]

**Other Designations** CAF-1 subunit B|CAF-I 60 kDa subunit|M-phase phosphoprotein 7|chromatin assembly factor 1 subunit B|chromatin assembly factor I p60 subunit|human chromatin assembly factor-I p60 subunit

## Publication Reference

- [In vivo study of the nucleosome assembly functions of ASF1 histone chaperones in human cells.](#)

Galvani A, Courbeyrette R, Agez M, Ochsenbein F, Mann C, Thuret JY.

Molecular and Cellular Biology 2008 Jun; 28(11):3672.

Application: WB-Ce, Human, HeLa cells

- [Local action of the chromatin assembly factor CAF-1 at sites of nucleotide excision repair in vivo.](#)

Green CM, Almouzni G.

The EMBO Journal 2003 Oct; 22(19):5163.

Application: IF, Human, Fibroblasts, HeLa cells

- [Replication-dependent marking of DNA by PCNA facilitates CAF-1-coupled inheritance of chromatin.](#)

Shibahara K, Stillman B.

Cell 1999 Feb; 96(4):575.

- [Immunological characterization of chromatin assembly factor I, a human cell factor required for chromatin assembly during DNA replication in vitro.](#)

Smith S, Stillman B.

The Journal of Biological Chemistry 1991 Jun; 266(18):12041.

Application: ICC, IP, WB-Ce, WB-Re, Human, HEK 293 cells, HeLa cells, Recombinant protein